

## CDNF Antibody

PACO07383

### Description

---

This CDNF Antibody is supplied as a kit for advanced applications. The kit includes Bradford Reagent to quantify total protein concentration for accurate sample normalization (Optional).

### Product Information

---

<b>SKU:</b>	PACO07383
<b>Contents:</b>	50µg Bradford Reagent: 1 vial (2ml)
<b>Category:</b>	-
<b>Synonyms:</b>	Arginine rich mutated in early stage tumors like 1 antibody, ARMET L1 antibody, ARMET like protein 1 antibody, ARMET-like protein 1 antibody, ARMETL 1 antibody, ARMETL1 antibody, CDNF antibody, CDNF_HUMAN antibody, Cerebral dopamine neurotrophic factor antibody, Conserved dopamine neurotrophic factor antibody
<b>Clone:</b>	-
<b>Applications:</b>	<b>IHC</b> <b>ELISA</b>
<b>Conjugation:</b>	Non-conjugated
<b>Reactivity:</b>	Human

### Antibody Data

---

<b>Isotype:</b>	-
<b>Uniprot:</b>	Q49AH0
<b>Host Species:</b>	Rabbit
<b>Purification:</b>	The antibody was affinity-purified from rabbit serum by affinity-chromatography using specific immunogen.
<b>Immunogen:</b>	Synthetic peptide from Human protein at AA range: 31-80
<b>Immunogen Species:</b>	Homo sapiens (Human)
<b>Buffer:</b>	Liquid in PBS containing 50% glycerol, 0.5% BSA and 0.02% sodium azide.
<b>Form:</b>	Liquid

**Manufacturers Statement:** This final kit system is assembled and quality-released by Assay Genie Limited.

## Preparation & Storage

---

**Storage:** Upon receipt, store at -20°C or -80°C. Avoid repeated freeze.  
Store Bradford Reagent at Room Temperature for 1 Year.

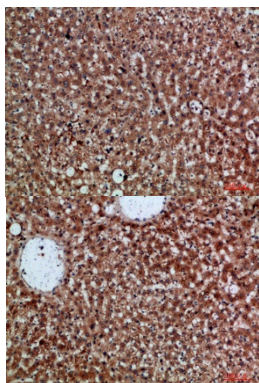
Recommended Dilutions:	Application	Recommended Dilution
	IHC	1:50-300
	ELISA	1:10000-20000

**Protein Quantification (Optional):** To quantify total protein levels, use the Bradford Reagent included in this kit. Visit <https://www.assaygenie.com/bradford-protein-assay-protocol/> to view the full protocol

## Validation Data

---

**Image**



**Description**

Immunohistochemical analysis of paraffin-embedded human-liver, antibody was diluted at 1:200

Immunohistochemical analysis of paraffin-embedded human-liver, antibody was diluted at 1:200