

DLEU7 Antibody

PACO07390

Description

This DLEU7 Antibody is supplied as a kit for advanced applications. The kit includes Bradford Reagent to quantify total protein concentration for accurate sample normalization (Optional).

Product Information

SKU:	PACO07390
Contents:	50µg Bradford Reagent: 1 vial (2ml)
Category:	-
Synonyms:	Deleted in lymphocytic leukemia 7 antibody, DLEU7 antibody, LEU7_HUMAN antibody, Leukemia-associated protein 7 antibody
Clone:	-
Applications:	IHC ELISA
Conjugation:	Non-conjugated
Reactivity:	Human

Antibody Data

Isotype:	-
Uniprot:	Q6UYE1
Host Species:	Rabbit
Purification:	The antibody was affinity-purified from rabbit serum by affinity-chromatography using specific immunogen.
Immunogen:	Synthetic peptide from Human protein at AA range: 51-100
Immunogen Species:	Homo sapiens (Human)
Buffer:	Liquid in PBS containing 50% glycerol, 0.5% BSA and 0.02% sodium azide.
Form:	Liquid

Manufacturers Statement: This final kit system is assembled and quality-released by Assay Genie Limited.

Preparation & Storage

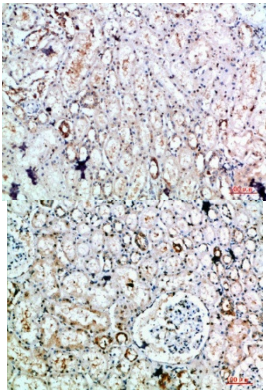
Storage: Upon receipt, store at -20°C or -80°C. Avoid repeated freeze.
Store Bradford Reagent at Room Temperature for 1 Year.

Recommended Dilutions:	Application	Recommended Dilution
	IHC	1:50-300
	ELISA	1:10000-20000

Protein Quantification (Optional): To quantify total protein levels, use the Bradford Reagent included in this kit. Visit <https://www.assaygenie.com/bradford-protein-assay-protocol/> to view the full protocol

Validation Data

Image



Description

Immunohistochemical analysis of paraffin-embedded human-kidney, antibody was diluted at 1:200

Immunohistochemical analysis of paraffin-embedded human-kidney, antibody was diluted at 1:200