

NUTM1 Antibody

PACO07432

Description

This NUTM1 Antibody is supplied as a kit for advanced applications. The kit includes Bradford Reagent to quantify total protein concentration for accurate sample normalization (Optional).

Product Information

SKU:	PACO07432
Contents:	50µg Bradford Reagent: 1 vial (2ml)
Category:	-
Synonyms:	C15orf55 antibody, Chromosome 15 open reading frame 55 antibody, DKFZp434O192 antibody, MGC138683 antibody, MGC138684 antibody, Nuclear protein in testis antibody, NUT antibody, NUT_HUMAN antibody, Protein NUT antibody
Clone:	-
Applications:	WB ELISA
Conjugation:	Non-conjugated
Reactivity:	Human

Antibody Data

Isotype:	-
Uniprot:	Q86Y26
Host Species:	Rabbit
Purification:	The antibody was affinity-purified from rabbit antiserum by affinity-chromatography using epitope-specific immunogen.
Immunogen:	Synthesized peptide derived from Human NUT. at AA range: 1082-1131
Immunogen Species:	Homo sapiens (Human)
Buffer:	Liquid in PBS containing 50% glycerol, 0.5% BSA and 0.02% sodium azide.
Form:	Liquid

Preparation & Storage

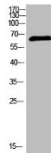
Storage: Upon receipt, store at -20°C or -80°C. Avoid repeated freeze.
Store Bradford Reagent at Room Temperature for 1 Year.

Recommended Dilutions:	Application	Recommended Dilution
	WB	1:500-2000
	ELISA	1:10000-20000

Protein Quantification (Optional): To quantify total protein levels, use the Bradford Reagent included in this kit. Visit <https://www.assaygenie.com/bradford-protein-assay-protocol/> to view the full protocol

Validation Data

Image



Description

Western Blot analysis of 293T cells using primary antibody diluted at 1:1000(4°C overnight). Secondary antibody:Goat Anti-rabbit IgG IRDye 800(diluted at 1:5000, 25°C, 1 hour)