

## KRT14/KRT17 Antibody

PACO07457

### Description

---

This KRT14/KRT17 Antibody is supplied as a kit for advanced applications. The kit includes Bradford Reagent to quantify total protein concentration for accurate sample normalization (Optional).

### Product Information

---

|                      |  |
|----------------------|--|
| <b>SKU:</b>          | PACO07457                              |
| <b>Contents:</b>     | 50µg<br>Bradford Reagent: 1 vial (2ml) |
| <b>Category:</b>     | -                                      |
| <b>Synonyms:</b>     | -                                      |
| <b>Clone:</b>        | -                                      |
| <b>Applications:</b> | <b>WB</b> <b>ELISA</b>                 |
| <b>Conjugation:</b>  | Non-conjugated                         |
| <b>Reactivity:</b>   | Human, Mouse, Rat                      |

### Antibody Data

---

|                           |   |
|---------------------------|---|
| <b>Isotype:</b>           | -   |
| <b>Uniprot:</b>           | P02533 Q04695   |
| <b>Host Species:</b>      | Rabbit  |
| <b>Purification:</b>      | The antibody was affinity-purified from rabbit serum by affinity-chromatography using specific immunogen. |
| <b>Immunogen:</b>         | Synthetic peptide from AA range: 261-310  |
| <b>Immunogen Species:</b> | Homo sapiens (Human)  |
| <b>Buffer:</b>            | Liquid in PBS containing 50% glycerol, 0.5% BSA and 0.02% sodium azide.                                   |
| <b>Form:</b>              | Liquid  |

## Preparation & Storage

---

**Storage:** Upon receipt, store at -20°C or -80°C. Avoid repeated freeze.  
Store Bradford Reagent at Room Temperature for 1 Year.

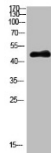
| Recommended Dilutions: | Application | Recommended Dilution     |
|------------------------|-------------|--------------------------|
|                        | WB          | 1:500-10000ELISA:1:10000 |

**Protein Quantification (Optional):** To quantify total protein levels, use the Bradford Reagent included in this kit. Visit <https://www.assaygenie.com/bradford-protein-assay-protocol/> to view the full protocol

## Validation Data

---

### Image



### Description

Western Blot analysis of HEPG2 cells using Antibody diluted at 1000