

ADAMTSL2 Antibody

PACO15315

Description

This ADAMTSL2 Antibody is supplied as a kit for advanced applications. The kit includes Bradford Reagent to quantify total protein concentration for accurate sample normalization (Optional).

Product Information

| | |
|----------------------|--|
| SKU: | PACO15315 |
| Contents: | 50µl Bradford Reagent: 1 vial (2ml) |
| Category: | - |
| Synonyms: | ADAMTS like 2 antibody, ADAMTS like protein 2 antibody, ADAMTS-like protein 2 antibody, ADAMTSL 2 antibody, ADAMTSL-2 antibody, ADAMTSL2 antibody, ATL2_HUMAN antibody, FLJ45164 antibody, KIAA0605 antibody |
| Clone: | - |
| Applications: | ELISA WB |
| Conjugation: | Non-conjugated |
| Reactivity: | Human, Mouse |

Antibody Data

| | |
|---------------------------|---|
| Isotype: | IgG |
| Uniprot: | Q86TH1 |
| Host Species: | Rabbit |
| Purification: | Antigen affinity purification |
| Immunogen: | Fusion protein of Human ADAMTSL2 |
| Immunogen Species: | Homo sapiens (Human) |
| Buffer: | -20°C, pH7.4 PBS, 0.05% NaN ₃ , 40% Glycerol |
| Form: | Liquid |

Manufacturers Statement: This final kit system is assembled and quality-released by Assay Genie Limited.

Preparation & Storage

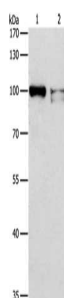
Storage: Upon receipt, store at -20°C or -80°C. Avoid repeated freeze.
Store Bradford Reagent at Room Temperature for 1 Year.

| Recommended Dilutions: | Application | Recommended Dilution |
|------------------------|-------------|----------------------|
| | ELISA | 1:1000-1:2000 |
| | WB | 1:200-1:1000 |

Protein Quantification (Optional): To quantify total protein levels, use the Bradford Reagent included in this kit. Visit <https://www.assaygenie.com/bradford-protein-assay-protocol/> to view the full protocol

Validation Data

Image



Description

Gel: 8%SDS-PAGE, Lysate: 40 µg, Lane 1-2: K562 cells, Jurkat cells, Primary antibody: PACO15315 at dilution 1/350, Secondary antibody: Goat anti rabbit IgG at 1/8000 dilution, Exposure time: 5 minutes