

## Gjc3 Antibody

PACO17742

### Description

---

This Gjc3 Antibody is supplied as a kit for advanced applications. The kit includes Bradford Reagent to quantify total protein concentration for accurate sample normalization (Optional).

### Product Information

---

<b>SKU:</b>	PACO17742
<b>Contents:</b>	50µl Bradford Reagent: 1 vial (2ml)
<b>Category:</b>	-
<b>Synonyms:</b>	Gjc3, Cx29, Gje1, Gap junction gamma-3 protein, Connexin-29, Gap junction epsilon-1 protein
<b>Clone:</b>	-
<b>Applications:</b>	<b>ELISA</b> <b>IHC</b>
<b>Conjugation:</b>	Non-conjugated
<b>Reactivity:</b>	Human, Mouse

### Antibody Data

---

<b>Isotype:</b>	IgG
<b>Uniprot:</b>	Q921C1
<b>Host Species:</b>	Rabbit
<b>Purification:</b>	Antigen affinity purification
<b>Immunogen:</b>	Synthetic peptide of Mouse Gjc3
<b>Immunogen Species:</b>	Mus musculus (Mouse)
<b>Buffer:</b>	-20°C, pH7.4 PBS, 0.05% NaN3, 40% Glycerol
<b>Form:</b>	Liquid

**Manufacturers Statement:** This final kit system is assembled and quality-released by Assay Genie Limited.

## Preparation & Storage

---

**Storage:** Upon receipt, store at -20°C or -80°C. Avoid repeated freeze.

Store Bradford Reagent at Room Temperature for 1 Year.

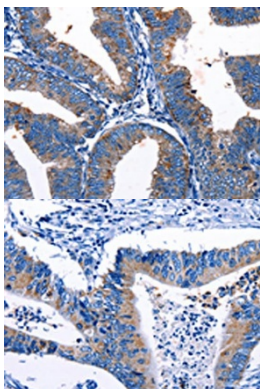
Recommended Dilutions:	Application	Recommended Dilution
	ELISA	1:1000-1:2000
	IHC	1:10-1:50

**Protein Quantification (Optional):** To quantify total protein levels, use the Bradford Reagent included in this kit. Visit <https://www.assaygenie.com/bradford-protein-assay-protocol/> to view the full protocol

## Validation Data

---

**Image**



**Description**

The image on the left is immunohistochemistry of paraffin-embedded Human cervical cancer tissue using PACO17742 at dilution 1/10, on the right is treated with synthetic peptide. (Original magnification: ×200)

The image on the left is immunohistochemistry of paraffin-embedded Human colon cancer tissue using PACO17742 at dilution 1/10, on the right is treated with synthetic peptide. (Original magnification: ×200)