

## DMBT1 Antibody

PACO17791

### Description

---

This DMBT1 Antibody is supplied as a kit for advanced applications. The kit includes Bradford Reagent to quantify total protein concentration for accurate sample normalization (Optional).

### Product Information

---

<b>SKU:</b>	PACO17791
<b>Contents:</b>	50µl Bradford Reagent: 1 vial (2ml)
<b>Category:</b>	-
<b>Synonyms:</b>	Apactin antibody, CRP antibody, CRP-[a] antibody, CRP-[b] antibody, CRP-ductin antibody, Crpd antibody, DBMT1 antibody, Deleted in malignant brain tumors 1 antibody, Deleted in malignant brain tumors 1 protein antibody, DMBT 1 antibody, DMBT1 antibody, DMBT1 prototype precursor antibody, DMBT1/6kb.1 protein precursor antibody, DMBT1/8kb.1 protein antibody, DMBT1/8kb.2 protein precursor antibody, DMBT1_HUMAN antibody, Ebnerin antibody, FLJ61058 antibody, Glycoprotein 300 antibody, Glycoprotein 340 antibody, Gp 340 antibody, Gp-340 antibody, gp300 antibody, GP340 antibody, Gp340 variant protein ...Read more
<b>Clone:</b>	-
<b>Applications:</b>	<b>ELISA</b> <b>IHC</b>
<b>Conjugation:</b>	Non-conjugated
<b>Reactivity:</b>	Human, Mouse, Rat

### Antibody Data

---

<b>Isotype:</b>	IgG
<b>Uniprot:</b>	Q9UGM3
<b>Host Species:</b>	Rabbit
<b>Purification:</b>	Antigen affinity purification
<b>Immunogen:</b>	Synthetic peptide of Human DMBT1
<b>Immunogen Species:</b>	Homo sapiens (Human)
<b>Buffer:</b>	-20°C, pH7.4 PBS, 0.05% NaN3, 40% Glycerol

**Manufacturers Statement:** This final kit system is assembled and quality-released by Assay Genie Limited.

**Form:** Liquid

## Preparation & Storage

---

**Storage:** Upon receipt, store at -20°C or -80°C. Avoid repeated freeze.  
Store Bradford Reagent at Room Temperature for 1 Year.

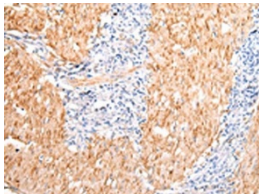
Recommended Dilutions:	Application	Recommended Dilution
	ELISA	1:1000-1:2000
	IHC	1:10-1:50

**Protein Quantification (Optional):** To quantify total protein levels, use the Bradford Reagent included in this kit. Visit <https://www.assaygenie.com/bradford-protein-assay-protocol/> to view the full protocol

## Validation Data

---

### Image



### Description

The image on the left is immunohistochemistry of paraffin-embedded Human gastric cancer tissue using PACO17791 at dilution 1/20, on the right is treated with synthetic peptide. (Original magnification: ×200)