

CMTM7 Antibody

PACO17940

Description

This CMTM7 Antibody is supplied as a kit for advanced applications. The kit includes Bradford Reagent to quantify total protein concentration for accurate sample normalization (Optional).

Product Information

SKU:	PACO17940
Contents:	50µl Bradford Reagent: 1 vial (2ml)
Category:	-
Synonyms:	CMTM7, CKLFSF7, CKLF-like MARVEL transmembrane domain-containing protein 7, Chemokine-like factor superfamily member 7
Clone:	-
Applications:	ELISA IHC
Conjugation:	Non-conjugated
Reactivity:	Human

Antibody Data

Isotype:	IgG
Uniprot:	Q96FZ5
Host Species:	Rabbit
Purification:	Antigen affinity purification
Immunogen:	Synthetic peptide of Human CMTM7
Immunogen Species:	Homo sapiens (Human)
Buffer:	-20°C, pH7.4 PBS, 0.05% NaN3, 40% Glycerol
Form:	Liquid

Preparation & Storage

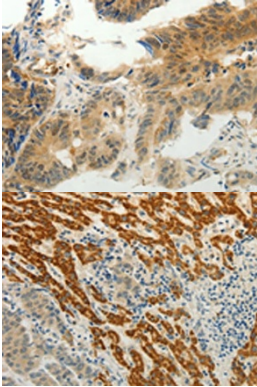
Storage: Upon receipt, store at -20°C or -80°C. Avoid repeated freeze.
Store Bradford Reagent at Room Temperature for 1 Year.

Recommended Dilutions:	Application	Recommended Dilution
	ELISA	1:1000-1:5000
	IHC	1:25-1:100

Protein Quantification (Optional): To quantify total protein levels, use the Bradford Reagent included in this kit. Visit <https://www.assaygenie.com/bradford-protein-assay-protocol/> to view the full protocol

Validation Data

Image



Description

The image on the left is immunohistochemistry of paraffin-embedded Human colon cancer tissue using PACO17940 at dilution 1/30, on the right is treated with synthetic peptide. (Original magnification: X200)

The image on the left is immunohistochemistry of paraffin-embedded Human liver cancer tissue using PACO17940 at dilution 1/30, on the right is treated with synthetic peptide. (Original magnification: X200)