

MATN1 Antibody

PACO18189

Description

This MATN1 Antibody is supplied as a kit for advanced applications. The kit includes Bradford Reagent to quantify total protein concentration for accurate sample normalization (Optional).

Product Information

| | |
|----------------------|--|
| SKU: | PACO18189 |
| Contents: | 50µl Bradford Reagent: 1 vial (2ml) |
| Category: | - |
| Synonyms: | Cartilage matrix protein antibody, CMP antibody, CRTM antibody, Matn1 antibody, MATN1_HUMAN antibody, Matrilin 1 antibody, Matrilin 1 cartilage matrix protein antibody, Matrilin-1 antibody |
| Clone: | - |
| Applications: | ELISA IHC |
| Conjugation: | Non-conjugated |
| Reactivity: | Human |

Antibody Data

| | |
|---------------------------|---|
| Isotype: | IgG |
| Uniprot: | P21941 |
| Host Species: | Rabbit |
| Purification: | Antigen affinity purification |
| Immunogen: | Synthetic peptide of Human MATN1 |
| Immunogen Species: | Homo sapiens (Human) |
| Buffer: | -20°C, pH7.4 PBS, 0.05% NaN ₃ , 40% Glycerol |
| Form: | Liquid |

Manufacturers Statement: This final kit system is assembled and quality-released by Assay Genie Limited.

Preparation & Storage

Storage: Upon receipt, store at -20°C or -80°C. Avoid repeated freeze.

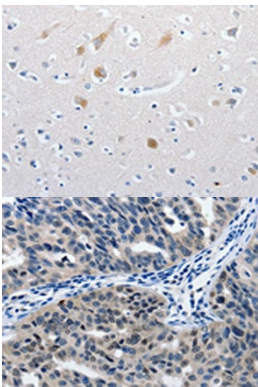
Store Bradford Reagent at Room Temperature for 1 Year.

| Recommended Dilutions: | Application | Recommended Dilution |
|------------------------|-------------|----------------------|
| | ELISA | 1:1000-1:5000 |
| | IHC | 1:25-1:100 |

Protein Quantification (Optional): To quantify total protein levels, use the Bradford Reagent included in this kit. Visit <https://www.assaygenie.com/bradford-protein-assay-protocol/> to view the full protocol

Validation Data

Image



Description

The image on the left is immunohistochemistry of paraffin-embedded Human brain tissue using PACO18189 at dilution 1/60, on the right is treated with synthetic peptide. (Original magnification: ×200)

The image on the left is immunohistochemistry of paraffin-embedded Human ovarian cancer tissue using PACO18189 at dilution 1/60, on the right is treated with synthetic peptide. (Original magnification: ×200)