

## AGAP1 Antibody

PACO18527

### Description

---

This AGAP1 Antibody is supplied as a kit for advanced applications. The kit includes Bradford Reagent to quantify total protein concentration for accurate sample normalization (Optional).

### Product Information

---

<b>SKU:</b>	PACO18527
<b>Contents:</b>	50µl Bradford Reagent: 1 vial (2ml)
<b>Category:</b>	-
<b>Synonyms:</b>	AGAP 1 antibody, AGAP-1 antibody, Agap1 antibody, AGAP1_HUMAN antibody, Arf GAP with GTP binding proteinlike ANK repeat and PH domains 1 antibody, Arf-GAP with GTPase, ANK repeat and PH domain-containing protein 1 antibody, ArfGAP with GTPase domain ankyrin repeat and PH domain 1 antibody, Centaurin gamma 2 antibody, Centaurin-gamma-2 antibody, CENTG2 antibody, Cnt-g2 antibody, GGAP 1 antibody, GGAP1 antibody, GTP binding and GTPase activating protein 1 antibody, GTP-binding and GTPase-activating protein 1 antibody, KIAA1099 antibody, MGC71657 antibody
<b>Clone:</b>	-
<b>Applications:</b>	<b>ELISA</b> <b>WB</b> <b>IHC</b>
<b>Conjugation:</b>	Non-conjugated
<b>Reactivity:</b>	Human, Mouse

### Antibody Data

---

<b>Isotype:</b>	IgG
<b>Uniprot:</b>	Q9UPQ3
<b>Host Species:</b>	Rabbit
<b>Purification:</b>	Antigen affinity purification
<b>Immunogen:</b>	Synthetic peptide of Human AGAP1
<b>Immunogen Species:</b>	Homo sapiens (Human)
<b>Buffer:</b>	-20°C, pH7.4 PBS, 0.05% NaN3, 40% Glycerol

**Manufacturers Statement:** This final kit system is assembled and quality-released by Assay Genie Limited.

**Form:** Liquid

## Preparation & Storage

**Storage:** Upon receipt, store at -20°C or -80°C. Avoid repeated freeze.

Store Bradford Reagent at Room Temperature for 1 Year.

**Recommended Dilutions:**

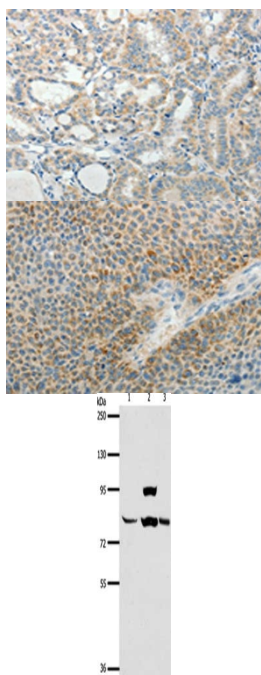
Application	Recommended Dilution
ELISA	1:2000-1:5000
WB	1:500-1:2000
IHC	1:25-1:100

**Protein Quantification (Optional):**

To quantify total protein levels, use the Bradford Reagent included in this kit. Visit <https://www.assaygenie.com/bradford-protein-assay-protocol/> to view the full protocol

## Validation Data

**Image**



**Description**

The image on the left is immunohistochemistry of paraffin-embedded Human thyroid cancer tissue using PACO18527 at dilution 1/25, on the right is treated with synthetic peptide. (Original magnification: ×200)

The image on the left is immunohistochemistry of paraffin-embedded Human liver cancer tissue using PACO18527 at dilution 1/25, on the right is treated with synthetic peptide. (Original magnification: ×200)

Gel: 8%SDS-PAGE, Lysate: 40 µg, Lane 1-3: Human liver cancer tissue, hela cells, mouse lung tissue, Primary antibody: PACO18527 at dilution 1/400, Secondary antibody: Goat anti rabbit IgG at 1/8000 dilution, Exposure time: 1 minute