

CACNA1G Antibody

PACO19378

Description

This CACNA1G Antibody is supplied as a kit for advanced applications. The kit includes Bradford Reagent to quantify total protein concentration for accurate sample normalization (Optional).

Product Information

SKU:	PACO19378
Contents:	50µl Bradford Reagent: 1 vial (2ml)
Category:	-
Synonyms:	CACNA1G antibody, KIAA1123Voltage-dependent T-type calcium channel subunit alpha-1G antibody, Cav3.1c antibody, NBR13 antibody, Voltage-gated calcium channel subunit alpha Cav3.1 antibody
Clone:	-
Applications:	ELISA IHC
Conjugation:	Non-conjugated
Reactivity:	Human,Rat

Antibody Data

Isotype:	IgG
Uniprot:	O43497
Host Species:	Rabbit
Purification:	Antigen affinity purification
Immunogen:	Synthetic peptide of Human CACNA1G
Immunogen Species:	Homo sapiens (Human)
Buffer:	-20°C, pH7.4 PBS, 0.05% NaN ₃ , 40% Glycerol
Form:	Liquid

Manufacturers Statement: This final kit system is assembled and quality-released by Assay Genie Limited.

Preparation & Storage

Storage: Upon receipt, store at -20°C or -80°C. Avoid repeated freeze.

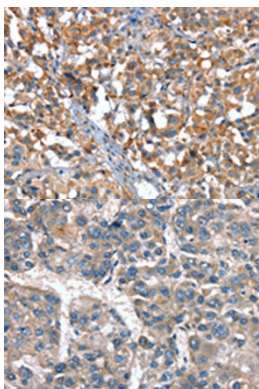
Store Bradford Reagent at Room Temperature for 1 Year.

Recommended Dilutions:	Application	Recommended Dilution
	ELISA	1:1000-1:2000
	IHC	1:15-1:50

Protein Quantification (Optional): To quantify total protein levels, use the Bradford Reagent included in this kit. Visit <https://www.assaygenie.com/bradford-protein-assay-protocol/> to view the full protocol

Validation Data

Image



Description

The image on the left is immunohistochemistry of paraffin-embedded Human thyroid cancer tissue using PACO19378 at dilution 1/20, on the right is treated with synthetic peptide. (Original magnification: ×200)

The image on the left is immunohistochemistry of paraffin-embedded Human liver cancer tissue using PACO19378 at dilution 1/20, on the right is treated with synthetic peptide. (Original magnification: ×200)