

## IMPAD1 Antibody

PACO19838

### Description

---

This IMPAD1 Antibody is supplied as a kit for advanced applications. The kit includes Bradford Reagent to quantify total protein concentration for accurate sample normalization (Optional).

### Product Information

---

<b>SKU:</b>	PACO19838
<b>Contents:</b>	50µl Bradford Reagent: 1 vial (2ml)
<b>Category:</b>	-
<b>Synonyms:</b>	IMPAD1 antibody, IMPA3 antibody, Golgi-resident adenosine 3',5'-bisphosphate 3'-phosphatase antibody, Golgi-resident PAP phosphatase antibody, gPAPP antibody, EC 3.1.3.7 antibody, Inositol monophosphatase domain-containing protein 1 antibody, Myo-inositol monophosphatase A3 antibody, Phosphoadenosine phosphate 3'-nucleotidase antibody
<b>Clone:</b>	-
<b>Applications:</b>	<b>ELISA</b> <b>IHC</b>
<b>Conjugation:</b>	Non-conjugated
<b>Reactivity:</b>	Human, Mouse, Rat

### Antibody Data

---

<b>Isotype:</b>	IgG
<b>Uniprot:</b>	Q9NX62
<b>Host Species:</b>	Rabbit
<b>Purification:</b>	Antigen affinity purification
<b>Immunogen:</b>	Synthetic peptide of Human IMPAD1
<b>Immunogen Species:</b>	Homo sapiens (Human)
<b>Buffer:</b>	-20°C, pH7.4 PBS, 0.05% NaN <sub>3</sub> , 40% Glycerol
<b>Form:</b>	Liquid

**Manufacturers Statement:** This final kit system is assembled and quality-released by Assay Genie Limited.

## Preparation & Storage

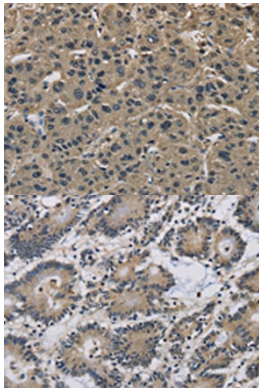
**Storage:** Upon receipt, store at -20°C or -80°C. Avoid repeated freeze.  
Store Bradford Reagent at Room Temperature for 1 Year.

Recommended Dilutions:	Application	Recommended Dilution
	ELISA	1:1000-1:2000
	IHC	1:25-1:100

**Protein Quantification (Optional):** To quantify total protein levels, use the Bradford Reagent included in this kit. Visit <https://www.assaygenie.com/bradford-protein-assay-protocol/> to view the full protocol

## Validation Data

### Image



### Description

The image on the left is immunohistochemistry of paraffin-embedded Human liver cancer tissue using PACO19838 at dilution 1/20, on the right is treated with synthetic peptide. (Original magnification: ×200)

The image on the left is immunohistochemistry of paraffin-embedded Human colon cancer tissue using PACO19838 at dilution 1/20, on the right is treated with synthetic peptide. (Original magnification: ×200)