

## MAGEF1 Antibody

PACO19980

### Description

---

This MAGEF1 Antibody is supplied as a kit for advanced applications. The kit includes Bradford Reagent to quantify total protein concentration for accurate sample normalization (Optional).

### Product Information

---

<b>SKU:</b>	PACO19980
<b>Contents:</b>	50µl Bradford Reagent: 1 vial (2ml)
<b>Category:</b>	-
<b>Synonyms:</b>	MAGE F1 antigen antibody, MAGE-F1 antigen antibody, MAGEF 1 antibody, MAGEF1 antibody, MAGF1_HUMAN antibody, Melanoma antigen family F, 1 antibody, Melanoma associated antigen F1 antibody, Melanoma-associated antigen F1 antibody, MGC19617 antibody
<b>Clone:</b>	-
<b>Applications:</b>	<b>ELISA</b> <b>WB</b> <b>IHC</b>
<b>Conjugation:</b>	Non-conjugated
<b>Reactivity:</b>	Human

### Antibody Data

---

<b>Isotype:</b>	IgG
<b>Uniprot:</b>	Q9HAY2
<b>Host Species:</b>	Rabbit
<b>Purification:</b>	Antigen affinity purification
<b>Immunogen:</b>	Synthetic peptide of Human MAGEF1
<b>Immunogen Species:</b>	Homo sapiens (Human)
<b>Buffer:</b>	-20°C, pH7.4 PBS, 0.05% NaN3, 40% Glycerol
<b>Form:</b>	Liquid

**Manufacturers Statement:** This final kit system is assembled and quality-released by Assay Genie Limited.

## Preparation & Storage

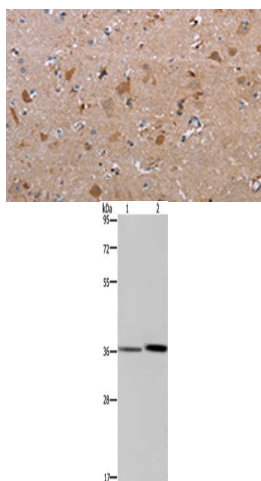
**Storage:** Upon receipt, store at -20°C or -80°C. Avoid repeated freeze.  
Store Bradford Reagent at Room Temperature for 1 Year.

Recommended Dilutions:	Application	Recommended Dilution
	ELISA	1:1000-1:2000
	WB	1:500-1:2000
	IHC	1:25-1:100

**Protein Quantification (Optional):** To quantify total protein levels, use the Bradford Reagent included in this kit. Visit <https://www.assaygenie.com/bradford-protein-assay-protocol/> to view the full protocol

## Validation Data

### Image



### Description

The image on the left is immunohistochemistry of paraffin-embedded Human brain tissue using PACO19980 at dilution 1/30, on the right is treated with synthetic peptide. (Original magnification: ×200)

Gel: 8%SDS-PAGE, Lysate: 40 µg, Lane 1-2: A549 cells, human fetal liver tissue, Primary antibody: PACO19980 at dilution 1/300, Secondary antibody: Goat anti rabbit IgG at 1/8000 dilution, Exposure time: 1 minute