

POU6F2 Antibody

PACO20265

Description

This POU6F2 Antibody is supplied as a kit for advanced applications. The kit includes Bradford Reagent to quantify total protein concentration for accurate sample normalization (Optional).

Product Information

SKU:	PACO20265
Contents:	50µl Bradford Reagent: 1 vial (2ml)
Category:	-
Synonyms:	POU6F2 antibody, RPF1 antibody, POU domain antibody, class 6 antibody, transcription factor 2 antibody, Retina-derived POU domain factor 1 antibody, RPF-1 antibody
Clone:	-
Applications:	ELISA WB IHC
Conjugation:	Non-conjugated
Reactivity:	Human, Mouse, Rat

Antibody Data

Isotype:	IgG
Uniprot:	P78424
Host Species:	Rabbit
Purification:	Antigen affinity purification
Immunogen:	Synthetic peptide of Human POU6F2
Immunogen Species:	Homo sapiens (Human)
Buffer:	-20°C, pH7.4 PBS, 0.05% NaN3, 40% Glycerol
Form:	Liquid

Preparation & Storage

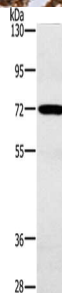
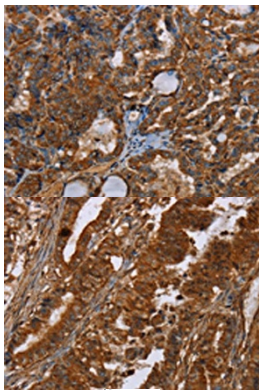
Storage: Upon receipt, store at -20°C or -80°C. Avoid repeated freeze.
Store Bradford Reagent at Room Temperature for 1 Year.

Recommended Dilutions:	Application	Recommended Dilution
	ELISA	1:1000-1:2000
	WB	1:200-1:1000
	IHC	1:50-1:200

Protein Quantification (Optional): To quantify total protein levels, use the Bradford Reagent included in this kit. Visit <https://www.assaygenie.com/bradford-protein-assay-protocol/> to view the full protocol

Validation Data

Image



Description

The image on the left is immunohistochemistry of paraffin-embedded Human thyroid cancer tissue using PACO20265 at dilution 1/30, on the right is treated with synthetic peptide. (Original magnification: ×200)

The image on the left is immunohistochemistry of paraffin-embedded Human esophagus cancer tissue using PACO20265 at dilution 1/30, on the right is treated with synthetic peptide. (Original magnification: ×200)

Gel: 6%SDS-PAGE, Lysate: 40 µg, Lane: Mouse heart tissue, Primary antibody: PACO20265 at dilution 1/200, Secondary antibody: Goat anti rabbit IgG at 1/8000 dilution, Exposure time: 30 seconds