

TSPY1 Antibody

PACO20782

Description

This TSPY1 Antibody is supplied as a kit for advanced applications. The kit includes Bradford Reagent to quantify total protein concentration for accurate sample normalization (Optional).

Product Information

| | |
|----------------------|-------------------------------------------|
| SKU: | PACO20782 |
| Contents: | 50µl Bradford Reagent: 1 vial (2ml) |
| Category: | - |
| Synonyms: | - |
| Clone: | - |
| Applications: | ELISA IHC |
| Conjugation: | Non-conjugated |
| Reactivity: | Human |

Antibody Data

| | |
|---------------------------|---------------------------------------------------------|
| Isotype: | IgG |
| Uniprot: | Q540R4 |
| Host Species: | Rabbit |
| Purification: | Antigen affinity purification |
| Immunogen: | Synthetic peptide of Human TSPY1 |
| Immunogen Species: | Homo sapiens (Human) |
| Buffer: | -20°C, pH7.4 PBS, 0.05% NaN ₃ , 40% Glycerol |
| Form: | Liquid |

Preparation & Storage

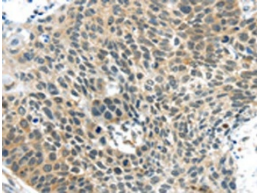
Storage: Upon receipt, store at -20°C or -80°C. Avoid repeated freeze.
Store Bradford Reagent at Room Temperature for 1 Year.

| Recommended Dilutions: | Application | Recommended Dilution |
|------------------------|-------------|----------------------|
| | ELISA | 1:2000-1:10000 |
| | IHC | 1:30-1:150 |

Protein Quantification (Optional): To quantify total protein levels, use the Bradford Reagent included in this kit. Visit <https://www.assaygenie.com/bradford-protein-assay-protocol/> to view the full protocol

Validation Data

Image



Description

The image on the left is immunohistochemistry of paraffin-embedded Human esophagus cancer tissue using PACO20782 at dilution 1/40, on the right is treated with synthetic peptide. (Original magnification: ×200)