

## WASF3 Antibody

PACO20871

### Description

---

This WASF3 Antibody is supplied as a kit for advanced applications. The kit includes Bradford Reagent to quantify total protein concentration for accurate sample normalization (Optional).

### Product Information

---

<b>SKU:</b>	PACO20871
<b>Contents:</b>	50µl Bradford Reagent: 1 vial (2ml)
<b>Category:</b>	-
<b>Synonyms:</b>	-
<b>Clone:</b>	-
<b>Applications:</b>	<a href="#">ELISA</a> <a href="#">IHC</a>
<b>Conjugation:</b>	Non-conjugated
<b>Reactivity:</b>	Human, Mouse

### Antibody Data

---

<b>Isotype:</b>	IgG
<b>Uniprot:</b>	Q9UPY6
<b>Host Species:</b>	Rabbit
<b>Purification:</b>	Antigen affinity purification
<b>Immunogen:</b>	Synthetic peptide of Human WASF3
<b>Immunogen Species:</b>	Homo sapiens (Human)
<b>Buffer:</b>	-20°C, pH7.4 PBS, 0.05% NaN <sub>3</sub> , 40% Glycerol
<b>Form:</b>	Liquid

## Preparation & Storage

---

**Storage:** Upon receipt, store at -20°C or -80°C. Avoid repeated freeze.  
Store Bradford Reagent at Room Temperature for 1 Year.

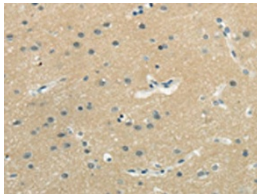
Recommended Dilutions:	Application	Recommended Dilution
	ELISA	1:2000-1:5000
	IHC	1:20-1:100

**Protein Quantification (Optional):** To quantify total protein levels, use the Bradford Reagent included in this kit. Visit <https://www.assaygenie.com/bradford-protein-assay-protocol/> to view the full protocol

## Validation Data

---

### Image



### Description

The image on the left is immunohistochemistry of paraffin-embedded Human brain tissue using PACO20871 at dilution 1/25, on the right is treated with synthetic peptide. (Original magnification: ×200)