

Maged1 Antibody

PACO21424

Description

This Maged1 Antibody is supplied as a kit for advanced applications. The kit includes Bradford Reagent to quantify total protein concentration for accurate sample normalization (Optional).

Product Information

SKU:	PACO21424
Contents:	100µl Bradford Reagent: 1 vial (2ml)
Category:	Polyclonal Antibody
Synonyms:	Maged1 antibody, Nrage antibody, Melanoma-associated antigen D1 antibody, Dlxin-1 antibody, MAGE-D1 antigen antibody, Neurotrophin receptor-interacting MAGE homolog antibody
Clone:	Polyclonal
Applications:	ELISA WB
Conjugation:	Non-conjugated
Reactivity:	Mouse,Rat

Antibody Data

Isotype:	-
Uniprot:	Q9QYH6
Host Species:	Rabbit
Purification:	Antibodies were produced by immunizing rabbits with synthetic peptide and KLH conjugates. Antibodies were purified by affinity-chromatography using epitope-specific peptide.
Immunogen:	Peptide with sequence C-EAEARAEARNRMGIGDE derived from Mouse Melanoma-associated antigen D1.
Immunogen Species:	Mus musculus (Mouse)
Buffer:	-
Form:	Supplied at 1.0mg/mL in phosphate buffered saline (without Mg ²⁺ and Ca ²⁺), pH 7.4, 150mM NaCl, 0.02% sodium azide and 50% glycerol.

Manufacturers Statement: This final kit system is assembled and quality-released by Assay Genie Limited.

Preparation & Storage

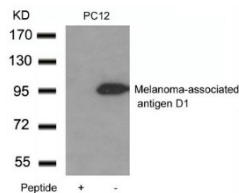
Storage: Upon receipt, store at -20°C or -80°C. Avoid repeated freeze.
Store Bradford Reagent at Room Temperature for 1 Year.

Recommended Dilutions:	Application	Recommended Dilution
	WB	1:500-1:1000

Protein Quantification (Optional): To quantify total protein levels, use the Bradford Reagent included in this kit. Visit <https://www.assaygenie.com/bradford-protein-assay-protocol/> to view the full protocol

Validation Data

Image



Description

Western blot analysis of extracts from PC12 cells using Melanoma-associated antigen D1 Antibody and the same antibody preincubated with blocking peptide.