

## Gabra3 Antibody

PACO21542

### Description

---

This Gabra3 Antibody is supplied as a kit for advanced applications. The kit includes Bradford Reagent to quantify total protein concentration for accurate sample normalization (Optional).

### Product Information

---

<b>SKU:</b>	PACO21542
<b>Contents:</b>	100µl Bradford Reagent: 1 vial (2ml)
<b>Category:</b>	Polyclonal Antibody
<b>Synonyms:</b>	Gabra3 antibody, Gabra-3 antibody, Gamma-aminobutyric acid receptor subunit alpha-3 antibody, GABA(A) receptor subunit alpha-3 antibody
<b>Clone:</b>	Polyclonal
<b>Applications:</b>	<b>ELISA</b> <b>WB</b>
<b>Conjugation:</b>	Non-conjugated
<b>Reactivity:</b>	Human,Rat,Mouse

### Antibody Data

---

<b>Isotype:</b>	-
<b>Uniprot:</b>	P20236
<b>Host Species:</b>	Rabbit
<b>Purification:</b>	Antibodies were produced by immunizing rabbits with synthetic peptide and KLH conjugates. Antibodies were purified by affinity-chromatography using epitope-specific peptide
<b>Immunogen:</b>	Peptide sequence around aa. 33~37(R-R-Q-E-P)derived from Rat GABA A Receptor a3.
<b>Immunogen Species:</b>	Rattus norvegicus (Rat)
<b>Buffer:</b>	-
<b>Form:</b>	Supplied at 1.0mg/mL in phosphate buffered saline (without Mg <sup>2+</sup> and Ca <sup>2+</sup> ), pH 7.4, 150mM NaCl, 0.02% sodium azide and 50% glycerol.

**Manufacturers Statement:** This final kit system is assembled and quality-released by Assay Genie Limited.

## Preparation & Storage

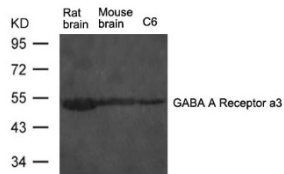
**Storage:** Upon receipt, store at -20°C or -80°C. Avoid repeated freeze.  
Store Bradford Reagent at Room Temperature for 1 Year.

Recommended Dilutions:	Application	Recommended Dilution
	WB	1:500-1:1000

**Protein Quantification (Optional):** To quantify total protein levels, use the Bradford Reagent included in this kit. Visit <https://www.assaygenie.com/bradford-protein-assay-protocol/> to view the full protocol

## Validation Data

### Image



### Description

Western blot analysis of extract from rat brain and mouse brain tissue and C6 cells using GABA A Receptor  $\alpha 3$  Antibody