

## Histone H2A Antibody

PACO21619

### Description

---

This Histone H2A Antibody is supplied as a kit for advanced applications. The kit includes Bradford Reagent to quantify total protein concentration for accurate sample normalization (Optional).

### Product Information

---

|                      |   |
|----------------------|---|
| <b>SKU:</b>          | PACO21619   |
| <b>Contents:</b>     | 100µl<br>Bradford Reagent: 1 vial (2ml)   |
| <b>Category:</b>     | Polyclonal Antibody   |
| <b>Synonyms:</b>     | H2AC11 antibody, H2AFP antibody, HIST1H2AG, antibody, H2AC13 antibody, H2AFC antibody, HIST1H2AI, antibody, H2AC15 antibody, H2AFD antibody, HIST1H2AK, antibody, H2AC16 antibody, H2AFI antibody, HIST1H2AL, antibody, H2AC17 antibody, H2AFN antibody, HIST1H2AMHistone H2A type 1 antibody, H2A.1 antibody, Histone H2A/ptl antibody |
| <b>Clone:</b>        | Polyclonal  |
| <b>Applications:</b> | <b>ELISA</b> <b>IHC</b>   |
| <b>Conjugation:</b>  | Non-conjugated  |
| <b>Reactivity:</b>   | Human, Mouse  |

### Antibody Data

---

|                           |   |
|---------------------------|---|
| <b>Isotype:</b>           | -   |
| <b>Uniprot:</b>           | P0C0S8  |
| <b>Host Species:</b>      | Rabbit  |
| <b>Purification:</b>      | The antibody was affinity-purified from rabbit antiserum by affinity-chromatography using epitope-specific immunogen. |
| <b>Immunogen:</b>         | Synthesized peptide derived from Internal of Human Histone H2A.   |
| <b>Immunogen Species:</b> | Homo sapiens (Human)  |
| <b>Buffer:</b>            | -   |

**Manufacturers Statement:** This final kit system is assembled and quality-released by Assay Genie Limited.

**Form:** Rabbit IgG in phosphate buffered saline (without  $Mg^{2+}$  and  $Ca^{2+}$ ), pH 7.4, 150mM NaCl, 0.02% sodium azide and 50% glycerol.

## Preparation & Storage

---

**Storage:** Upon receipt, store at -20°C or -80°C. Avoid repeated freeze.  
Store Bradford Reagent at Room Temperature for 1 Year.

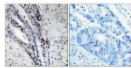
| Recommended Dilutions: | Application | Recommended Dilution |
|------------------------|-------------|----------------------|
|                        | IHC         | 1:50-1:100           |

**Protein Quantification (Optional):** To quantify total protein levels, use the Bradford Reagent included in this kit. Visit <https://www.assaygenie.com/bradford-protein-assay-protocol/> to view the full protocol

## Validation Data

---

### Image



### Description

Immunohistochemistry analysis of paraffin-embedded human colon carcinoma tissue using Histone H2A antibody.