

TUBA1A/TUBA1B/TUBA1C/TUBA3C/TUBA3E/TUBA4A (Ab-272) Antibody

PACO21639

Description

This TUBA1A/TUBA1B/TUBA1C/TUBA3C/TUBA3E/TUBA4A (Ab-272) Antibody is supplied as a kit for advanced applications. The kit includes Bradford Reagent to quantify total protein concentration for accurate sample normalization (Optional).

Product Information

SKU:	PACO21639
Contents:	100µl Bradford Reagent: 1 vial (2ml)
Category:	Polyclonal Antibody
Synonyms:	Alpha tubulin 3 antibody, Alpha-tubulin 3 antibody, B alpha 1 antibody, FLJ25113 antibody, LIS3 antibody, TBA1A_HUMAN antibody, TUBA1A antibody, TUBA3 antibody, Tubulin alpha 1a antibody, Tubulin alpha 1A chain antibody, Tubulin alpha 3 antibody, Tubulin alpha 3 chain antibody, Tubulin alpha brain specific antibody, Tubulin alpha-1A chain antibody, Tubulin alpha-3 chain antibody, Tubulin B alpha 1 antibody, Tubulin B-alpha-1 antibody
Clone:	Polyclonal
Applications:	ELISA WB
Conjugation:	Non-conjugated
Reactivity:	Human, Mouse

Antibody Data

Isotype:	-
Uniprot:	Q71U36
Host Species:	Rabbit
Purification:	The antibody was affinity-purified from rabbit antiserum by affinity-chromatography using epitope-specific immunogen.
Immunogen:	Synthesized non-phosphopeptide derived from Human TUBA1/3/4 around the phosphorylation site of tyrosine 272 (A-T-Y(p)-A-P).
Immunogen Species:	Homo sapiens (Human)

Manufacturers Statement: This final kit system is assembled and quality-released by Assay Genie Limited.

Buffer: -

Form: Rabbit IgG in phosphate buffered saline (without Mg^{2+} and Ca^{2+}), pH 7.4, 150mM NaCl, 0.02% sodium azide and 50% glycerol.

Preparation & Storage

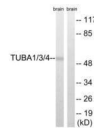
Storage: Upon receipt, store at -20°C or -80°C. Avoid repeated freeze.
Store Bradford Reagent at Room Temperature for 1 Year.

Recommended Dilutions:	Application	Recommended Dilution
	WB	1:500-1:3000

Protein Quantification (Optional): To quantify total protein levels, use the Bradford Reagent included in this kit. Visit <https://www.assaygenie.com/bradford-protein-assay-protocol/> to view the full protocol

Validation Data

Image



Description

Western blot analysis of extracts from Rat brain cells, using TUBA1/3/4 (Ab-272) antibody.