

SLC4A10/SLC4A8 Antibody

PACO22625

Description

This SLC4A10/SLC4A8 Antibody is supplied as a kit for advanced applications. The kit includes Bradford Reagent to quantify total protein concentration for accurate sample normalization (Optional).

Product Information

SKU:	PACO22625
Contents:	100µl Bradford Reagent: 1 vial (2ml)
Category:	Polyclonal Antibody
Synonyms:	NBCn 2 antibody, NBCn2 antibody, NCBE antibody, S4A10 antibody, S4A10_HUMAN antibody, SLC 4A10 antibody, SLC4 A10 antibody, SLC4A 10 antibody, Slc4a10 antibody, Sodium driven chloride bicarbonate exchanger antibody, Sodium-driven chloride bicarbonate exchanger antibody, Solute carrier family 4 member 10 antibody, Solute carrier family 4, sodium bicarbonate cotransporter like, member 10 antibody, Solute carrier family 4, sodium bicarbonate transporter like, member 10 antibody, Solute carrier family 4, sodium bicarbonate transporter, member 10 antibody
Clone:	Polyclonal
Applications:	ELISA WB
Conjugation:	Non-conjugated
Reactivity:	Human, Mouse

Antibody Data

Isotype:	-
Uniprot:	Q6U841
Host Species:	Rabbit
Purification:	The antibody was affinity-purified from rabbit antiserum by affinity-chromatography using epitope-specific immunogen.
Immunogen:	Synthesized peptide derived from internal of Human SLC4A8/10.
Immunogen Species:	Homo sapiens (Human)

Manufacturers Statement: This final kit system is assembled and quality-released by Assay Genie Limited.

Buffer: -

Form: Rabbit IgG in phosphate buffered saline (without Mg^{2+} and Ca^{2+}), pH 7.4, 150mM NaCl, 0.02% sodium azide and 50% glycerol.

Preparation & Storage

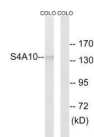
Storage: Upon receipt, store at -20°C or -80°C. Avoid repeated freeze.
Store Bradford Reagent at Room Temperature for 1 Year.

Recommended Dilutions:	Application	Recommended Dilution
	WB	1:500-1:3000

Protein Quantification (Optional): To quantify total protein levels, use the Bradford Reagent included in this kit. Visit <https://www.assaygenie.com/bradford-protein-assay-protocol/> to view the full protocol

Validation Data

Image



Description

Western blot analysis of extracts from COLO cells, using SLC4A8/10 antibody.