

## KRT38/KRT37 Antibody

PACO22755

### Description

---

This KRT38/KRT37 Antibody is supplied as a kit for advanced applications. The kit includes Bradford Reagent to quantify total protein concentration for accurate sample normalization (Optional).

### Product Information

---

<b>SKU:</b>	PACO22755
<b>Contents:</b>	100µl Bradford Reagent: 1 vial (2ml)
<b>Category:</b>	Polyclonal Antibody
<b>Synonyms:</b>	HA8 antibody, Hair keratin antibody, Hair keratin, type I Ha8 antibody, HHa8 antibody, HKA8 antibody, K38 antibody, Keratin 38 antibody, Keratin antibody, Keratin, hair, acidic, 8 antibody, Keratin, type I cuticular Ha8 antibody, Keratin-38 antibody, KRT38 antibody, KRT38_HUMAN antibody, KRTHA8 antibody, type I cuticular Ha8 antibody, type I Ha8 antibody
<b>Clone:</b>	Polyclonal
<b>Applications:</b>	<b>ELISA</b> <b>WB</b>
<b>Conjugation:</b>	Non-conjugated
<b>Reactivity:</b>	Human

### Antibody Data

---

<b>Isotype:</b>	-
<b>Uniprot:</b>	O76015
<b>Host Species:</b>	Rabbit
<b>Purification:</b>	The antibody was affinity-purified from rabbit antiserum by affinity-chromatography using epitope-specific immunogen.
<b>Immunogen:</b>	Synthesized peptide derived from internal of Human KRT37/38.
<b>Immunogen Species:</b>	Homo sapiens (Human)
<b>Buffer:</b>	-

**Manufacturers Statement:** This final kit system is assembled and quality-released by Assay Genie Limited.

**Form:** Rabbit IgG in phosphate buffered saline (without  $Mg^{2+}$  and  $Ca^{2+}$ ), pH 7.4, 150mM NaCl, 0.02% sodium azide and 50% glycerol.

## Preparation & Storage

---

**Storage:** Upon receipt, store at -20°C or -80°C. Avoid repeated freeze.  
Store Bradford Reagent at Room Temperature for 1 Year.

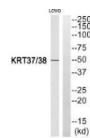
Recommended Dilutions:	Application	Recommended Dilution
	WB	1:500-1:3000

**Protein Quantification (Optional):** To quantify total protein levels, use the Bradford Reagent included in this kit. Visit <https://www.assaygenie.com/bradford-protein-assay-protocol/> to view the full protocol

## Validation Data

---

### Image



### Description

Western blot analysis of extracts from LOVO cells, using KRT37/38 antibody.