

## POTEG/POTEH Antibody

PACO23464

### Description

---

This POTEG/POTEH Antibody is supplied as a kit for advanced applications. The kit includes Bradford Reagent to quantify total protein concentration for accurate sample normalization (Optional).

### Product Information

---

<b>SKU:</b>	PACO23464
<b>Contents:</b>	100µl Bradford Reagent: 1 vial (2ml)
<b>Category:</b>	Polyclonal Antibody
<b>Synonyms:</b>	POTEG antibody, A26C2 antibody, POTE14 antibody, POTE ankyrin domain family member G antibody, ANKRD26-like family C member 2 antibody, Prostate antibody, ovary antibody, testis-expressed protein on chromosome 14 antibody, POTE-14 antibody
<b>Clone:</b>	Polyclonal
<b>Applications:</b>	<b>ELISA</b> <b>WB</b> <b>IHC</b>
<b>Conjugation:</b>	Non-conjugated
<b>Reactivity:</b>	Human

### Antibody Data

---

<b>Isotype:</b>	-
<b>Uniprot:</b>	Q6S5H5
<b>Host Species:</b>	Rabbit
<b>Purification:</b>	The antibody was affinity-purified from rabbit antiserum by affinity-chromatography using epitope-specific immunogen.
<b>Immunogen:</b>	Synthesized peptide derived from internal of Human A26C2/3.
<b>Immunogen Species:</b>	Homo sapiens (Human)
<b>Buffer:</b>	-
<b>Form:</b>	Rabbit IgG in phosphate buffered saline (without Mg <sup>2+</sup> and Ca <sup>2+</sup> ), pH 7.4, 150mM NaCl, 0.02% sodium azide and 50% glycerol.

**Manufacturers Statement:** This final kit system is assembled and quality-released by Assay Genie Limited.



## Preparation & Storage

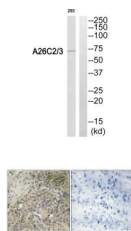
**Storage:** Upon receipt, store at -20°C or -80°C. Avoid repeated freeze.  
Store Bradford Reagent at Room Temperature for 1 Year.

Recommended Dilutions:	Application	Recommended Dilution
	WB	1:500-1:3000
	IHC	1:50-1:100

**Protein Quantification (Optional):** To quantify total protein levels, use the Bradford Reagent included in this kit. Visit <https://www.assaygenie.com/bradford-protein-assay-protocol/> to view the full protocol

## Validation Data

### Image



### Description

Western blot analysis of extracts from 293 cells, using A26C2/3 antibody.

Immunohistochemistry analysis of paraffin-embedded human prostate carcinoma tissue using A26C2/3 antibody.