

TBX15/TBX18 Antibody

PACO23730

Description

This TBX15/TBX18 Antibody is supplied as a kit for advanced applications. The kit includes Bradford Reagent to quantify total protein concentration for accurate sample normalization (Optional).

Product Information

SKU:	PACO23730
Contents:	100µl Bradford Reagent: 1 vial (2ml)
Category:	Polyclonal Antibody
Synonyms:	TBX15 antibody, TBX14 antibody, T-box transcription factor TBX15 antibody, T-box protein 15 antibody, T-box transcription factor TBX14 antibody, T-box protein 14 antibody
Clone:	Polyclonal
Applications:	ELISA WB IHC IF
Conjugation:	Non-conjugated
Reactivity:	Human, Mouse

Antibody Data

Isotype:	-
Uniprot:	Q96SF7
Host Species:	Rabbit
Purification:	The antibody was affinity-purified from rabbit antiserum by affinity-chromatography using epitope-specific immunogen.
Immunogen:	Synthesized peptide derived from internal of Human TBX15/18.
Immunogen Species:	Homo sapiens (Human)
Buffer:	-
Form:	Rabbit IgG in phosphate buffered saline (without Mg ²⁺ and Ca ²⁺), pH 7.4, 150mM NaCl, 0.02% sodium azide and 50% glycerol.

Manufacturers Statement: This final kit system is assembled and quality-released by Assay Genie Limited.

Preparation & Storage

Storage: Upon receipt, store at -20°C or -80°C. Avoid repeated freeze.
Store Bradford Reagent at Room Temperature for 1 Year.

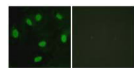
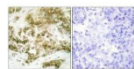
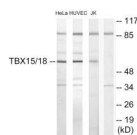
Recommended Dilutions:

Application	Recommended Dilution
WB	1:500-1:3000
IHC	1:50-1:100
IF	1:100-1:500

Protein Quantification (Optional): To quantify total protein levels, use the Bradford Reagent included in this kit. Visit <https://www.assaygenie.com/bradford-protein-assay-protocol/> to view the full protocol

Validation Data

Image



Description

Western blot analysis of extracts from HeLa cells, HUVEC cells and Jurkat cells, using TBX15/18 antibody.

Immunohistochemistry analysis of paraffin-embedded human breast carcinoma tissue using TBX15/18 antibody.

Immunofluorescence analysis of HeLa cells, using TBX15/18 antibody.