

XRCC6/XRCC5 Antibody

PACO23829

Description

This XRCC6/XRCC5 Antibody is supplied as a kit for advanced applications. The kit includes Bradford Reagent to quantify total protein concentration for accurate sample normalization (Optional).

Product Information

SKU:	PACO23829
Contents:	100µl Bradford Reagent: 1 vial (2ml)
Category:	Polyclonal Antibody
Synonyms:	5"-deoxyribose-5-phosphate lyase Ku70 antibody, 5"-dRP lyase Ku70 antibody, 70 kDa subunit of Ku antigen antibody, ATP dependent DNA helicase 2 subunit 1 antibody, ATP dependent DNA helicase II 70 kDa subunit antibody, ATP-dependent DNA helicase 2 subunit 1 antibody, ATP-dependent DNA helicase II 70 kDa subunit antibody, CTC box binding factor 75 kDa subunit antibody, CTC box-binding factor 75 kDa subunit antibody, CTC75 antibody, CTCBF antibody, DNA repair protein XRCC6 antibody, G22P1 antibody, Ku 70 antibody, Ku autoantigen p70 subunit antibody, Ku autoantigen, 70kDa antibody, Ku p70 anti... Read more
Clone:	Polyclonal
Applications:	ELISA WB IHC IF
Conjugation:	Non-conjugated
Reactivity:	Human, Mouse, Rat

Antibody Data

Isotype:	-
Uniprot:	P12956
Host Species:	Rabbit
Purification:	The antibody was affinity-purified from rabbit antiserum by affinity-chromatography using epitope-specific immunogen.
Immunogen:	Synthesized peptide derived from Human Ku70/80.

Manufacturers Statement: This final kit system is assembled and quality-released by Assay Genie Limited.

Immunogen Species: Homo sapiens (Human)

Buffer: -

Form: Rabbit IgG in phosphate buffered saline (without Mg²⁺ and Ca²⁺), pH 7.4, 150mM NaCl, 0.02% sodium azide and 50% glycerol.

Preparation & Storage

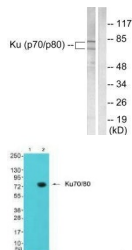
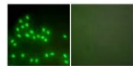
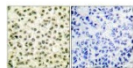
Storage: Upon receipt, store at -20°C or -80°C. Avoid repeated freeze.
Store Bradford Reagent at Room Temperature for 1 Year.

Recommended Dilutions:	Application	Recommended Dilution
	WB	1:500-1:3000
	IHC	1:50-1:100
	IF	1:100-1:500

Protein Quantification (Optional): To quantify total protein levels, use the Bradford Reagent included in this kit. Visit <https://www.assaygenie.com/bradford-protein-assay-protocol/> to view the full protocol

Validation Data

Image



Description

Immunohistochemical analysis of paraffin-embedded human breast carcinoma tissue using Ku70/80 antibody.

Immunofluorescence analysis of A549 cells, using Ku70/80 antibody.

Western blot analysis of extracts from LOVO cells, using Ku70/80 antibody.

Western blot analysis of extracts from JK cells (Lane 2), using Ku80 antibody. The lane on the left is treated with synthesized peptide.