

## Phospho-EPHA3 (Tyr779/833) Antibody

PACO24109

### Description

---

This Phospho-EPHA3 (Tyr779/833) Antibody is supplied as a kit for advanced applications. The kit includes Bradford Reagent to quantify total protein concentration for accurate sample normalization (Optional).

### Product Information

---

<b>SKU:</b>	PACO24109
<b>Contents:</b>	100µl Bradford Reagent: 1 vial (2ml)
<b>Category:</b>	Polyclonal Antibody
<b>Synonyms:</b>	AW492086 antibody, Cek4 antibody, EC 2.7.10.1 antibody, EK4 antibody, End3 antibody, Eph receptor A3 antibody, EPH-like kinase 4 antibody, EPH-like tyrosine kinase 1 antibody, EPHA3 antibody, EPHA3_HUMAN antibody, Ephrin receptor EphA3 antibody, Ephrin type-A receptor 3 antibody, ETK 1 antibody, ETK antibody, ETK1 antibody, HEK 4 antibody, HEK antibody, HEK4 antibody, Human embryo kinase 1 antibody, Human embryo kinase antibody, Mek4 antibody, MGC109882 antibody, Receptor tyrosine kinase HEK antibody, Testicular tissue protein Li 64 antibody, Tyro 4 antibody, Tyro4 antibody, TYRO4 protein tyro... <a href="#">Read more</a>
<b>Clone:</b>	Polyclonal
<b>Applications:</b>	<b>ELISA</b> <b>IHC</b>
<b>Conjugation:</b>	Non-conjugated
<b>Reactivity:</b>	Human, Mouse, Rat

### Antibody Data

---

<b>Isotype:</b>	-
<b>Uniprot:</b>	P29320
<b>Host Species:</b>	Rabbit
<b>Purification:</b>	Antibodies were produced by immunizing rabbits with synthetic phosphopeptide and KLH conjugates. Antibodies were purified by affinity-chromatography using epitope-specific phosphopeptide. Non-phospho specific antibodies were removed by chromatography usi

**Immunogen:** Peptide sequence around phosphorylation site of tyrosine 779/833 (E-A-Y(p)-T-T)/(Q-D-V(p)-I-K) derived from Human EPHA3/4/5.

**Immunogen Species:** Homo sapiens (Human)

**Buffer:** -

**Form:** Rabbit IgG in phosphate buffered saline (without Mg<sup>2+</sup> and Ca<sup>2+</sup>), pH 7.4, 150mM NaCl, 0.02% sodium azide and 50% glycerol.

## Preparation & Storage

---

**Storage:** Upon receipt, store at -20°C or -80°C. Avoid repeated freeze.  
Store Bradford Reagent at Room Temperature for 1 Year.

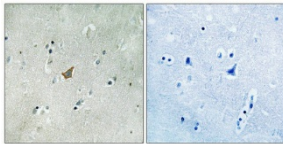
<b>Recommended Dilutions:</b>	<b>Application</b>	<b>Recommended Dilution</b>
	IHC	1:50-1:100

**Protein Quantification (Optional):** To quantify total protein levels, use the Bradford Reagent included in this kit. Visit <https://www.assaygenie.com/bradford-protein-assay-protocol/> to view the full protocol

## Validation Data

---

### Image



### Description

Immunohistochemical analysis of paraffin-embedded human brain tissue using EPHA3/4/5 (Phospho-Tyr779/833) antibody (left) or the same antibody preincubated with blocking peptide (right).