

## Phospho-TUBA1A/TUBA1B/TUBA1C/TUBA3C/TUBA3E/TUBA4A (Tyr272) Antibody

PACO24172

### Description

---

This Phospho-TUBA1A/TUBA1B/TUBA1C/TUBA3C/TUBA3E/TUBA4A (Tyr272) Antibody is supplied as a kit for advanced applications. The kit includes Bradford Reagent to quantify total protein concentration for accurate sample normalization (Optional).

### Product Information

---

<b>SKU:</b>	PACO24172
<b>Contents:</b>	100µl Bradford Reagent: 1 vial (2ml)
<b>Category:</b>	Polyclonal Antibody
<b>Synonyms:</b>	Alpha tubulin 3 antibody, Alpha-tubulin 3 antibody, B alpha 1 antibody, FLJ25113 antibody, LIS3 antibody, TBA1A_HUMAN antibody, TUBA1A antibody, TUBA3 antibody, Tubulin alpha 1a antibody, Tubulin alpha 1A chain antibody, Tubulin alpha 3 antibody, Tubulin alpha 3 chain antibody, Tubulin alpha brain specific antibody, Tubulin alpha-1A chain antibody, Tubulin alpha-3 chain antibody, Tubulin B alpha 1 antibody, Tubulin B-alpha-1 antibody
<b>Clone:</b>	Polyclonal
<b>Applications:</b>	<b>ELISA</b> <b>WB</b>
<b>Conjugation:</b>	Non-conjugated
<b>Reactivity:</b>	Human, Mouse, Rat

### Antibody Data

---

<b>Isotype:</b>	-
<b>Uniprot:</b>	Q71U36
<b>Host Species:</b>	Rabbit
<b>Purification:</b>	Antibodies were produced by immunizing rabbits with synthetic phosphopeptide and KLH conjugates. Antibodies were purified by affinity-chromatography using epitope-specific phosphopeptide. Non-phospho specific antibodies were removed by chromatogramphy usi

<b>Immunogen:</b>	Peptide sequence around phosphorylation site of tyrosine 272 (A-T-Y(p)-A-P) derived from Human TUBA1/3/4.
<b>Immunogen Species:</b>	Homo sapiens (Human)
<b>Buffer:</b>	-
<b>Form:</b>	Rabbit IgG in phosphate buffered saline (without Mg <sup>2+</sup> and Ca <sup>2+</sup> ), pH 7.4, 150mM NaCl, 0.02% sodium azide and 50% glycerol.

## Preparation & Storage

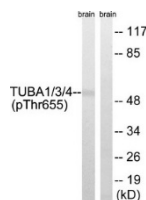
**Storage:** Upon receipt, store at -20°C or -80°C. Avoid repeated freeze.  
Store Bradford Reagent at Room Temperature for 1 Year.

Recommended Dilutions:	Application	Recommended Dilution
	WB	1:500-1:1000

**Protein Quantification (Optional):** To quantify total protein levels, use the Bradford Reagent included in this kit. Visit <https://www.assaygenie.com/bradford-protein-assay-protocol/> to view the full protocol

## Validation Data

### Image



### Description

Western blot analysis of extracts from Rat brain cells using TUBA1/3/4 (Phospho-Tyr272) Antibody. The lane on the right is treated with the antigen-specific peptide.