

Phospho-Cdc25b (Ser149) Antibody

PACO24346

Description

This Phospho-Cdc25b (Ser149) Antibody is supplied as a kit for advanced applications. The kit includes Bradford Reagent to quantify total protein concentration for accurate sample normalization (Optional).

Product Information

SKU:	PACO24346
Contents:	100µl Bradford Reagent: 1 vial (2ml)
Category:	Polyclonal Antibody
Synonyms:	-
Clone:	Polyclonal
Applications:	ELISA WB
Conjugation:	Non-conjugated
Reactivity:	Mouse,Rat

Antibody Data

Isotype:	-
Uniprot:	Q9DBN8
Host Species:	Rabbit
Purification:	Antibodies were produced by immunizing rabbits with synthetic peptide and KLH conjugates. Antibodies were purified by affinity-chromatography using epitope-specific peptide.
Immunogen:	Peptide sequence around phosphorylation site of Serine 149 (F-R-S(p)-L-P) derived from Mouse Cdc25B.
Immunogen Species:	Mus musculus (Mouse)
Buffer:	-
Form:	Supplied at 1.0mg/mL in phosphate buffered saline (without Mg ²⁺ and Ca ²⁺), pH 7.4, 150mM NaCl, 0.02% sodium azide and 50% glycerol.

Manufacturers Statement: This final kit system is assembled and quality-released by Assay Genie Limited.

Preparation & Storage

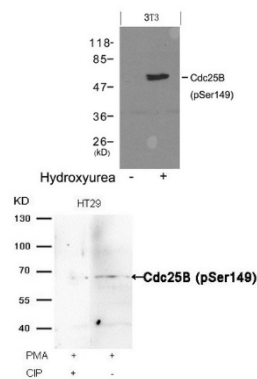
Storage: Upon receipt, store at -20°C or -80°C. Avoid repeated freeze.
Store Bradford Reagent at Room Temperature for 1 Year.

Recommended Dilutions:	Application	Recommended Dilution
	WB	1:500-1:1000

Protein Quantification (Optional): To quantify total protein levels, use the Bradford Reagent included in this kit. Visit <https://www.assaygenie.com/bradford-protein-assay-protocol/> to view the full protocol

Validation Data

Image



Description

Western blot analysis of extracts from 3T3 cells untreated(lane 1) or treated with Hydroxyurea(lane 2) using Cdc25B(Phospho-Ser149) Antibody.

Western blot analysis of extracts from HT29 cells, treated with PMA or calf intestinal phosphatase (CIP), using Cdc25B (Phospho-Ser149) Antibody.