

## Phospho-Ets1 (Thr38) Antibody

PACO24525

### Description

---

This Phospho-Ets1 (Thr38) Antibody is supplied as a kit for advanced applications. The kit includes Bradford Reagent to quantify total protein concentration for accurate sample normalization (Optional).

### Product Information

---

<b>SKU:</b>	PACO24525
<b>Contents:</b>	100µl Bradford Reagent: 1 vial (2ml)
<b>Category:</b>	Polyclonal Antibody
<b>Synonyms:</b>	Ets1 antibody, Ets-1Protein C-ets-1 antibody, p54 antibody
<b>Clone:</b>	Polyclonal
<b>Applications:</b>	<a href="#">ELISA</a> <a href="#">WB</a> <a href="#">IHC</a> <a href="#">IF</a>
<b>Conjugation:</b>	Non-conjugated
<b>Reactivity:</b>	Human, Mouse

### Antibody Data

---

<b>Isotype:</b>	-
<b>Uniprot:</b>	P27577
<b>Host Species:</b>	Rabbit
<b>Purification:</b>	Antibodies were produced by immunizing rabbits with synthetic phosphopeptide and KLH conjugates. Antibodies were purified by affinity-chromatography using epitope-specific phosphopeptide. Non-phospho specific antibodies were removed by chromatography using
<b>Immunogen:</b>	Peptide sequence around phosphorylation site of threonine 38(L-L-T(p)-P-S) derived from Human ETS1 .
<b>Immunogen Species:</b>	Mus musculus (Mouse)
<b>Buffer:</b>	-
<b>Form:</b>	Rabbit IgG in phosphate buffered saline (without Mg <sup>2+</sup> and Ca <sup>2+</sup> ), pH 7.4, 150mM NaCl, 0.02% sodium azide and 50% glycerol.

**Manufacturers Statement:** This final kit system is assembled and quality-released by Assay Genie Limited.



## Preparation & Storage

**Storage:** Upon receipt, store at -20°C or -80°C. Avoid repeated freeze.  
Store Bradford Reagent at Room Temperature for 1 Year.

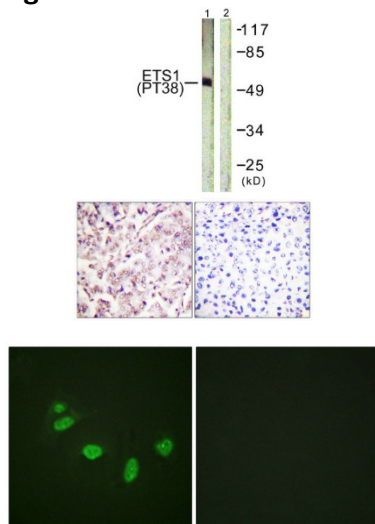
**Recommended Dilutions:**

Application	Recommended Dilution
WB	1:500-1:1000
IHC	1:50-1:100
IF	1:100-1:200

**Protein Quantification (Optional):** To quantify total protein levels, use the Bradford Reagent included in this kit. Visit <https://www.assaygenie.com/bradford-protein-assay-protocol/> to view the full protocol

## Validation Data

**Image**



**Description**

Western blot analysis of extracts from HepG2 cells using ETS1 (Phospho-Thr38) Antibody. The lane on the right is treated with the antigen-specific peptide.

Immunohistochemical analysis of paraffin-embedded human breast carcinoma tissue, using ETS1 (Phospho-Thr38) antibody (left) or the same antibody preincubated with blocking peptide (right).

Immunofluorescence staining of methanol-fixed HeLa cells using ETS1 (Phospho-Thr38) Antibody.