

Aldh1a1 Antibody

PACO24864

Description

This Aldh1a1 Antibody is supplied as a kit for advanced applications. The kit includes Bradford Reagent to quantify total protein concentration for accurate sample normalization (Optional).

Product Information

SKU:	PACO24864
Contents:	50µg Bradford Reagent: 1 vial (2ml)
Category:	-
Synonyms:	Aldh1a1 antibody, Ahd-2 antibody, Ahd2 antibody, Aldh1Retinal dehydrogenase 1 antibody, RALDH 1 antibody, RalDH1 antibody, EC 1.2.1.-antibody, EC 1.2.1.36 antibody, ALDH-E1 antibody, ALHDII antibody, Aldehyde dehydrogenase family 1 member A1 antibody, Aldehyde dehydrogenase antibody, cytosolic antibody
Clone:	Polyclonal
Applications:	ELISA WB
Conjugation:	Non-conjugated
Reactivity:	Mouse

Antibody Data

Isotype:	IgG
Uniprot:	P24549
Host Species:	Rabbit
Purification:	>95%, Protein G purified
Immunogen:	Recombinant Mouse Retinal dehydrogenase 1 protein (2-501AA)
Immunogen Species:	Mus musculus (Mouse)
Buffer:	Preservative: 0.03% Proclin 300 Constituents: 50% Glycerol, 0.01M PBS, PH 7.4
Form:	Liquid

Manufacturers Statement: This final kit system is assembled and quality-released by Assay Genie Limited.

Preparation & Storage

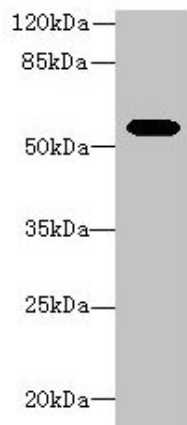
Storage: Upon receipt, store at -20°C or -80°C. Avoid repeated freeze.
Store Bradford Reagent at Room Temperature for 1 Year.

Recommended Dilutions:	Application	Recommended Dilution
	WB	1:500-1:2000

Protein Quantification (Optional): To quantify total protein levels, use the Bradford Reagent included in this kit. Visit <https://www.assaygenie.com/bradford-protein-assay-protocol/> to view the full protocol

Validation Data

Image



Description

Western blot All lanes: Aldh1a1 antibody at 8µg/ml + Mouse eye tissue Secondary Goat polyclonal to rabbit IgG at 1/10000 dilution Predicted band size: 55 kDa Observed band size: 55 kDa