

## Apoe Antibody

PACO25010

### Description

---

This Apoe Antibody is supplied as a kit for advanced applications. The kit includes Bradford Reagent to quantify total protein concentration for accurate sample normalization (Optional).

### Product Information

---

<b>SKU:</b>	PACO25010
<b>Contents:</b>	50µg Bradford Reagent: 1 vial (2ml)
<b>Category:</b>	-
<b>Synonyms:</b>	ApoeApolipoprotein E antibody, Apo-E antibody
<b>Clone:</b>	Polyclonal
<b>Applications:</b>	<span>ELISA</span> <span>WB</span>
<b>Conjugation:</b>	Non-conjugated
<b>Reactivity:</b>	Mouse

### Antibody Data

---

<b>Isotype:</b>	IgG
<b>Uniprot:</b>	P08226
<b>Host Species:</b>	Rabbit
<b>Purification:</b>	>95%, Protein G purified
<b>Immunogen:</b>	Recombinant Mouse Apolipoprotein E protein (19-311AA)
<b>Immunogen Species:</b>	Mus musculus (Mouse)
<b>Buffer:</b>	Preservative: 0.1mol/L NaCl, 15mmol/L NaN <sub>3</sub> , PH7.2
<b>Form:</b>	Liquid

## Preparation & Storage

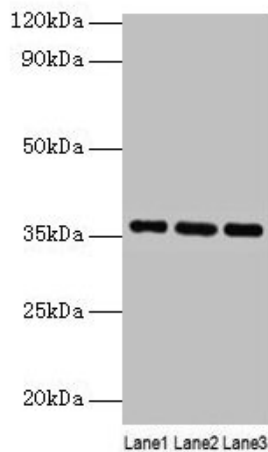
**Storage:** Upon receipt, store at -20°C or -80°C. Avoid repeated freeze.  
Store Bradford Reagent at Room Temperature for 1 Year.

Recommended Dilutions:	Application	Recommended Dilution
	WB	1:1000-1:5000

**Protein Quantification (Optional):** To quantify total protein levels, use the Bradford Reagent included in this kit. Visit <https://www.assaygenie.com/bradford-protein-assay-protocol/> to view the full protocol

## Validation Data

### Image



### Description

Western blot All lanes: Apoe antibody at 2µg/ml Lane 1: Mouse liver tissue Lane 2: Mouse brain tissue Lane 3: Mouse lung tissue Secondary Goat polyclonal to rabbit IgG at 1/10000 dilution Predicted band size: 36 kDa Observed band size: 36 kDa