

Wheat Gliadin Antibody

PACO25484

Description

This Wheat Gliadin Antibody is supplied as a kit for advanced applications. The kit includes Bradford Reagent to quantify total protein concentration for accurate sample normalization (Optional).

Product Information

SKU:	PACO25484
Contents:	50µg Bradford Reagent: 1 vial (2ml)
Category:	Polyclonal Antibody
Synonyms:	Wheat Gliadin
Clone:	Polyclonal
Applications:	ELISA WB
Conjugation:	Non-conjugated
Reactivity:	Plant

Antibody Data

Isotype:	IgG
Uniprot:	-
Host Species:	Rabbit
Purification:	>95%, Protein G purified
Immunogen:	Wheat Gliadin (Native Protein)
Immunogen Species:	Plant
Buffer:	Preservative: 0.03% Proclin 300 Constituents: 50% Glycerol, 0.01M PBS, PH 7.4
Form:	Liquid

Preparation & Storage

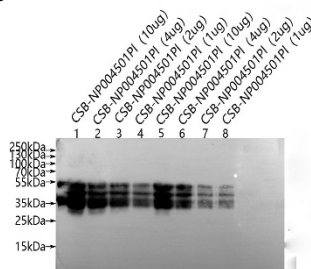
Storage: Upon receipt, store at -20°C or -80°C. Avoid repeated freeze.
Store Bradford Reagent at Room Temperature for 1 Year.

Recommended Dilutions:	Application	Recommended Dilution
	WB	1:1000-1:5000

Protein Quantification (Optional): To quantify total protein levels, use the Bradford Reagent included in this kit. Visit <https://www.assaygenie.com/bradford-protein-assay-protocol/> to view the full protocol

Validation Data

Image



Description

Western Blot Positive WB detected in: CSB-NP004501Pl(10µg), CSB-NP004501Pl(4µg), CSB-NP004501Pl(2µg), CSB-NP004501Pl(1µg), CSB-NP004501Pl(10µg), CSB-NP004501Pl(4µg), CSB-NP004501Pl(2µg), CSB-NP004501Pl(1µg) All lanes: Wheat Gliadin antibody at 1:1000 Secondary Goat polyclonal to rabbit IgG at 1/20000 dilution Predicted band size: 25-55 kDa Observed band size: 25-55 kDa Exposure time: 120s