

Cela2a Antibody

PACO25713

Description

This Cela2a Antibody is supplied as a kit for advanced applications. The kit includes Bradford Reagent to quantify total protein concentration for accurate sample normalization (Optional).

Product Information

SKU:	PACO25713
Contents:	50µg Bradford Reagent: 1 vial (2ml)
Category:	-
Synonyms:	Cela2a antibody, Ela-2 antibody, Ela2 antibody, Ela2aChymotrypsin-like elastase family member 2A antibody, EC 3.4.21.71 antibody, Elastase-2 antibody, Elastase-2A antibody
Clone:	Polyclonal
Applications:	ELISA WB
Conjugation:	Non-conjugated
Reactivity:	Mouse

Antibody Data

Isotype:	IgG
Uniprot:	P05208
Host Species:	Rabbit
Purification:	>95%, Protein G purified
Immunogen:	Recombinant Mouse Chymotrypsin-like elastase family member 2A protein (31-271AA)
Immunogen Species:	Mus musculus (Mouse)
Buffer:	Preservative: 0.03% Proclin 300 Constituents: 50% Glycerol, 0.01M PBS, PH 7.4
Form:	Liquid

Manufacturers Statement: This final kit system is assembled and quality-released by Assay Genie Limited.

Preparation & Storage

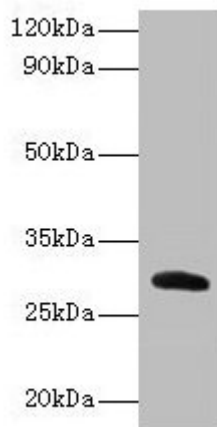
Storage: Upon receipt, store at -20°C or -80°C. Avoid repeated freeze.
Store Bradford Reagent at Room Temperature for 1 Year.

Recommended Dilutions:	Application	Recommended Dilution
	WB	1:1000-1:5000

Protein Quantification (Optional): To quantify total protein levels, use the Bradford Reagent included in this kit. Visit <https://www.assaygenie.com/bradford-protein-assay-protocol/> to view the full protocol

Validation Data

Image



Description

Western blot All lanes: Cela2a antibody at 2µg/ml + Recombinant Chymotrypsin-like elastase family member 2A protein 0.1µg Secondary Goat polyclonal to rabbit IgG at 1/15000 dilution Predicted band size: 29 kDa Observed band size: 29 kDa