

## CLDN20 Antibody

PACO25789

### Description

---

This CLDN20 Antibody is supplied as a kit for advanced applications. The kit includes Bradford Reagent to quantify total protein concentration for accurate sample normalization (Optional).

### Product Information

---

|                      |  |
|----------------------|--|
| <b>SKU:</b>          | PACO25789                              |
| <b>Contents:</b>     | 50µg<br>Bradford Reagent: 1 vial (2ml) |
| <b>Category:</b>     | -                                      |
| <b>Synonyms:</b>     | CLDN20, Claudin-20                     |
| <b>Clone:</b>        | Polyclonal                             |
| <b>Applications:</b> | ELISA WB IF                            |
| <b>Conjugation:</b>  | Non-conjugated                         |
| <b>Reactivity:</b>   | Human                                  |

### Antibody Data

---

|                           |   |
|---------------------------|---|
| <b>Isotype:</b>           | IgG   |
| <b>Uniprot:</b>           | P56880  |
| <b>Host Species:</b>      | Rabbit  |
| <b>Purification:</b>      | >95%, Protein G purified  |
| <b>Immunogen:</b>         | Recombinant Human Claudin-20 protein (29-81AA)                                |
| <b>Immunogen Species:</b> | Homo sapiens (Human)  |
| <b>Buffer:</b>            | Preservative: 0.03% Proclin 300 Constituents: 50% Glycerol, 0.01M PBS, PH 7.4 |
| <b>Form:</b>              | Liquid  |

**Manufacturers Statement:** This final kit system is assembled and quality-released by Assay Genie Limited.

## Preparation & Storage

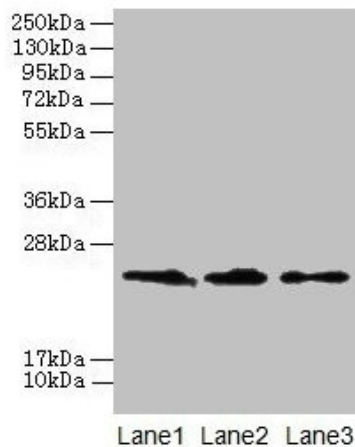
**Storage:** Upon receipt, store at -20°C or -80°C. Avoid repeated freeze.  
Store Bradford Reagent at Room Temperature for 1 Year.

| Recommended Dilutions: | Application | Recommended Dilution |
|------------------------|-------------|----------------------|
|                        | WB          | 1:1000-1:5000        |
|                        | IF          | 1:50-1:200           |

**Protein Quantification (Optional):** To quantify total protein levels, use the Bradford Reagent included in this kit. Visit <https://www.assaygenie.com/bradford-protein-assay-protocol/> to view the full protocol

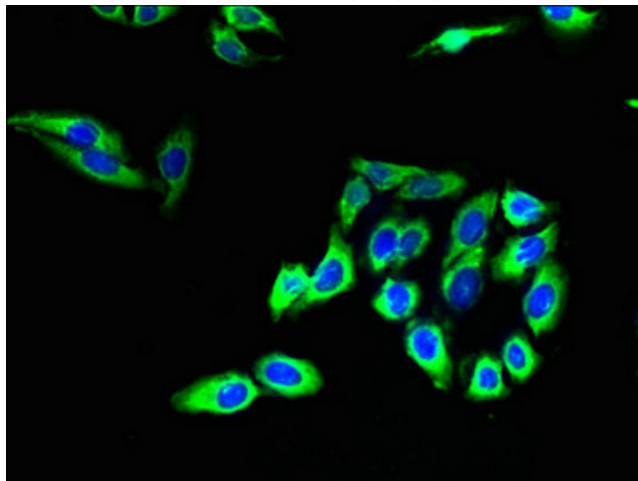
## Validation Data

### Image



### Description

Western blot All lanes: CLDN20 antibody at 4µg/ml Lane 1: A549 whole cell lysate Lane 2: HepG2 whole cell lysate Lane 3: PC-3 whole cell lysate Secondary Goat polyclonal to rabbit IgG at 1/10000 dilution Predicted band size: 24 kDa Observed band size: 24 kDa



Immunofluorescent analysis of HepG2 cells using PACO25789 at dilution of 1:100 and Alexa Fluor 488-conjugated AffiniPure Goat Anti-Rabbit IgG(H+L)