

CLEC3A Antibody

PACO25797

Description

This CLEC3A Antibody is supplied as a kit for advanced applications. The kit includes Bradford Reagent to quantify total protein concentration for accurate sample normalization (Optional).

Product Information

SKU:	PACO25797
Contents:	50µg Bradford Reagent: 1 vial (2ml)
Category:	-
Synonyms:	C-type (calcium dependent, carbohydrate-recognition domain) lectin, superfamily member 1 (cartilage-derived) antibody, C-type lectin domain family 3 member A antibody, C-type lectin superfamily member 1 antibody, Cartilage-derived C-type lectin antibody, CLC3A_HUMAN antibody, Clec3a antibody, CLECSF1 antibody
Clone:	Polyclonal
Applications:	ELISA WB IHC
Conjugation:	Non-conjugated
Reactivity:	Human, Mouse

Antibody Data

Isotype:	IgG
Uniprot:	O75596
Host Species:	Rabbit
Purification:	Antigen Affinity Purified
Immunogen:	Recombinant Human C-type lectin domain family 3 member A protein (23-197AA)
Immunogen Species:	Homo sapiens (Human)
Buffer:	Preservative: 0.03% Proclin 300 Constituents: 50% Glycerol, 0.01M PBS, PH 7.4
Form:	Liquid

Manufacturers Statement: This final kit system is assembled and quality-released by Assay Genie Limited.

Preparation & Storage

Storage: Upon receipt, store at -20°C or -80°C. Avoid repeated freeze.

Store Bradford Reagent at Room Temperature for 1 Year.

Recommended Dilutions:

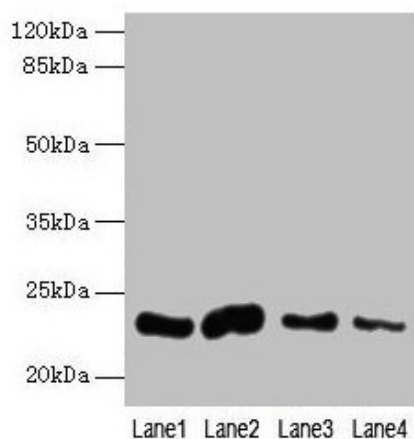
Application	Recommended Dilution
WB	1:500-1:5000
IHC	1:20-1:200

Protein Quantification (Optional):

To quantify total protein levels, use the Bradford Reagent included in this kit. Visit <https://www.assaygenie.com/bradford-protein-assay-protocol/> to view the full protocol

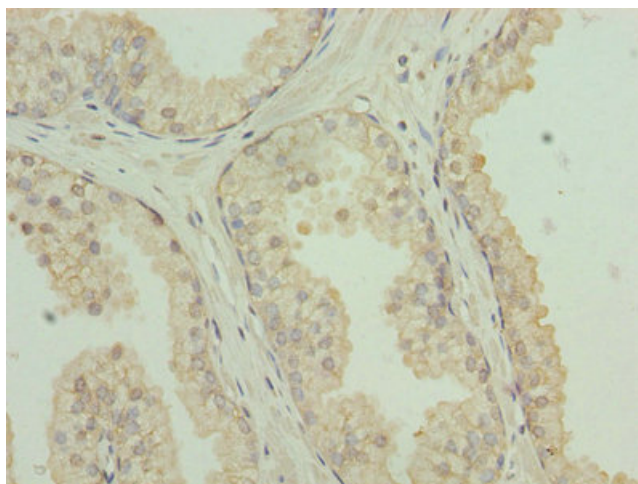
Validation Data

Image



Description

Western blot All lanes: CLEC3A antibody at 0.4µg/ml Lane 1: Mouse liver tissue Lane 2: Mouse kidney tissue Lane 3: Mouse brain tissue Lane 4: Mouse lung tissue Secondary Goat polyclonal to rabbit IgG at 1/10000 dilution Predicted band size: 23 kDa Observed band size: 23 kDa



Immunohistochemistry of paraffin-embedded human prostate cancer using PACO25797 at dilution of 1:100