

CELA3A Antibody

PACO26445

Description

This CELA3A Antibody is supplied as a kit for advanced applications. The kit includes Bradford Reagent to quantify total protein concentration for accurate sample normalization (Optional).

Product Information

SKU:	PACO26445
Contents:	50µg Bradford Reagent: 1 vial (2ml)
Category:	-
Synonyms:	CEL3A_HUMAN antibody, CELA3A antibody, Chymotrypsin-like elastase family member 3A antibody, ELA1 antibody, ELA2A antibody, ELA2B antibody, ELA3 antibody, ELA3A antibody, ELA3B antibody, Elastase 1 antibody, Elastase 2A antibody, Elastase 2B antibody, Elastase 3A antibody, Elastase 3A pancreatic antibody, Elastase 3B antibody, Elastase 3B pancreatic antibody, Elastase IIIA antibody, Elastase IIIB antibody, Elastase-3A antibody, Fecal pancreatic elastase 1 antibody, HLE antibody, Medullasin antibody, Pancreatic elastase IIA antibody, PE 1 antibody, PE1 antibody, Protease E antibody
Clone:	Polyclonal
Applications:	ELISA WB
Conjugation:	Non-conjugated
Reactivity:	Human, Mouse

Antibody Data

Isotype:	IgG
Uniprot:	P09093
Host Species:	Rabbit
Purification:	>95%, Protein G purified
Immunogen:	Recombinant Human Chymotrypsin-like elastase family member 3A protein (29-270AA)
Immunogen Species:	Homo sapiens (Human)

Manufacturers Statement: This final kit system is assembled and quality-released by Assay Genie Limited.

Buffer: Preservative: 0.03% Proclin 300 Constituents: 50% Glycerol, 0.01M PBS,
PH 7.4

Form: Liquid

Preparation & Storage

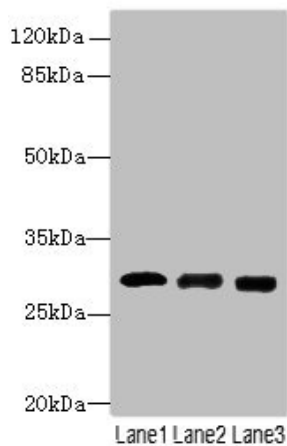
Storage: Upon receipt, store at -20°C or -80°C. Avoid repeated freeze.
Store Bradford Reagent at Room Temperature for 1 Year.

Recommended Dilutions:	Application	Recommended Dilution
	WB	1:1000-1:5000

Protein Quantification (Optional): To quantify total protein levels, use the Bradford Reagent included in this kit. Visit <https://www.assaygenie.com/bradford-protein-assay-protocol/> to view the full protocol

Validation Data

Image



Description

Western blot All lanes: CELA3A antibody at 14µg/ml
Lane 1: Mouse heart tissue Lane 2: Mouse skeletal muscle tissue Lane 3: Jurkat whole cell lysate Secondary Goat polyclonal to rabbit IgG at 1/10000 dilution
Predicted band size: 30 kDa Observed band size: 30 kDa