

Eno1 Antibody

PACO26477

Description

This Eno1 Antibody is supplied as a kit for advanced applications. The kit includes Bradford Reagent to quantify total protein concentration for accurate sample normalization (Optional).

Product Information

SKU:	PACO26477
Contents:	50µg Bradford Reagent: 1 vial (2ml)
Category:	-
Synonyms:	Eno1 antibody, Eno-1 antibody, Alpha-enolase antibody, EC 4.2.1.11 antibody, 2-phospho-D-glycerate hydro-lyase antibody, Enolase 1 antibody, Non-neural enolase antibody, NNE antibody
Clone:	Polyclonal
Applications:	ELISA WB
Conjugation:	Non-conjugated
Reactivity:	Mouse, Human

Antibody Data

Isotype:	IgG
Uniprot:	P17182
Host Species:	Rabbit
Purification:	>95%, Protein G purified
Immunogen:	Recombinant Mouse Alpha-enolase protein (2-433AA)
Immunogen Species:	Mus musculus (Mouse)
Buffer:	Preservative: 0.03% Proclin 300 Constituents: 50% Glycerol, 0.01M PBS, PH 7.4
Form:	Liquid

Preparation & Storage

Storage: Upon receipt, store at -20°C or -80°C. Avoid repeated freeze.

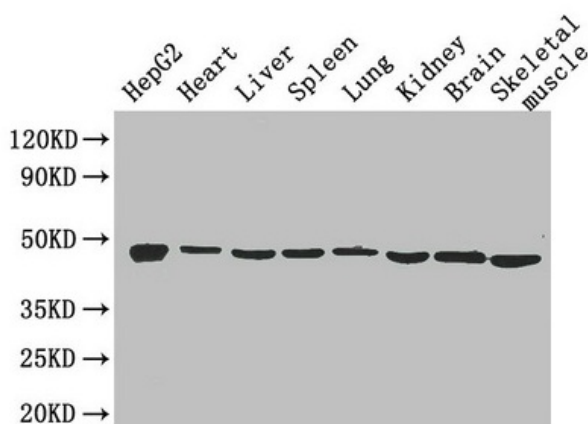
Store Bradford Reagent at Room Temperature for 1 Year.

Recommended Dilutions:	Application	Recommended Dilution
	WB	1:1000-1:5000

Protein Quantification (Optional): To quantify total protein levels, use the Bradford Reagent included in this kit. Visit <https://www.assaygenie.com/bradford-protein-assay-protocol/> to view the full protocol

Validation Data

Image



Description

Western Blot Positive WB detected in: HepG2 whole cell lysate, Mouse heart tissue, Mouse liver tissue, Mouse spleen tissue, Mouse lung tissue, Mouse kidney tissue, Mouse brain tissue, Mouse skeletal muscle tissue All lanes: Eno1 antibody at 2.6µg/ml Secondary Goat polyclonal to rabbit IgG at 1/50000 dilution Predicted band size: 48 kDa Observed band size: 48 kDa