

Idh1 Antibody

PACO27485

Description

This Idh1 Antibody is supplied as a kit for advanced applications. The kit includes Bradford Reagent to quantify total protein concentration for accurate sample normalization (Optional).

Product Information

SKU:	PACO27485
Contents:	50µg Bradford Reagent: 1 vial (2ml)
Category:	-
Synonyms:	Idh1 antibody, Isocitrate dehydrogenase [NADP] cytoplasmic antibody, IDH antibody, EC 1.1.1.42 antibody, Cytosolic NADP-isocitrate dehydrogenase antibody, IDP antibody, NADP(+)-specific ICDH antibody, Oxalosuccinate decarboxylase antibody
Clone:	Polyclonal
Applications:	ELISA IHC IF
Conjugation:	Non-conjugated
Reactivity:	Mouse

Antibody Data

Isotype:	IgG
Uniprot:	O88844
Host Species:	Rabbit
Purification:	>95%, Protein G purified
Immunogen:	Recombinant Mouse Isocitrate dehydrogenase [NADP] cytoplasmic protein (1-240AA)
Immunogen Species:	Mus musculus (Mouse)
Buffer:	Preservative: 0.03% Proclin 300 Constituents: 50% Glycerol, 0.01M PBS, PH 7.4
Form:	Liquid

Manufacturers Statement: This final kit system is assembled and quality-released by Assay Genie Limited.

Preparation & Storage

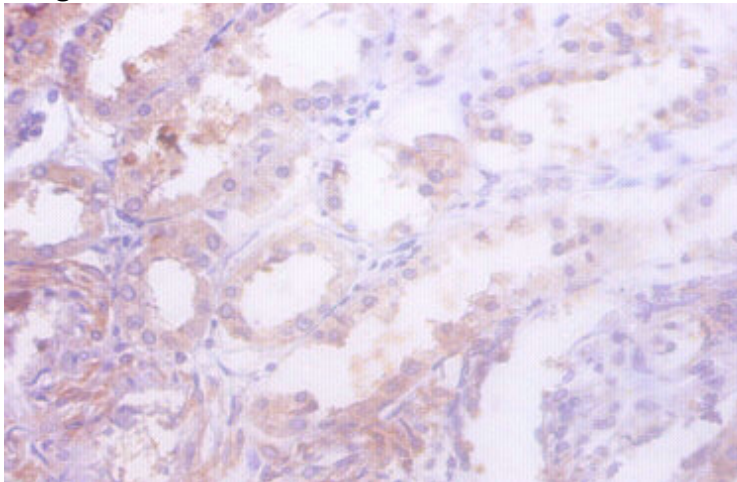
Storage: Upon receipt, store at -20°C or -80°C. Avoid repeated freeze.
Store Bradford Reagent at Room Temperature for 1 Year.

Recommended Dilutions:	Application	Recommended Dilution
	IHC	1:20-1:200
	IF	1:50-1:200

Protein Quantification (Optional): To quantify total protein levels, use the Bradford Reagent included in this kit. Visit <https://www.assaygenie.com/bradford-protein-assay-protocol/> to view the full protocol

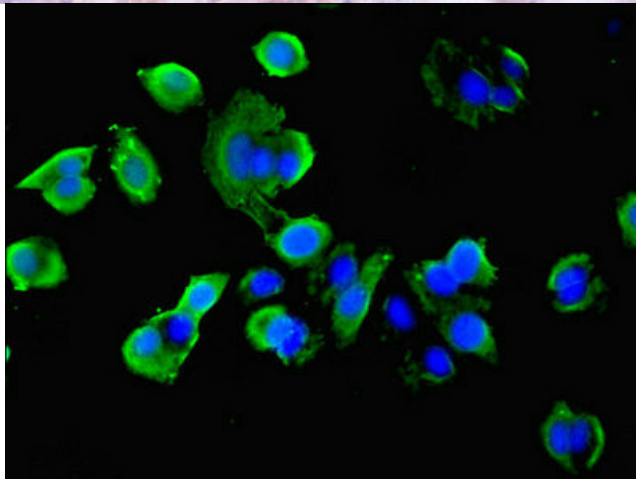
Validation Data

Image



Description

Immunohistochemistry of paraffin-embedded human kidney tissue using PACO27485 at dilution of 1:50



Immunofluorescent analysis of MCF-7 cells using PACO27485 at dilution of 1:100 and Alexa Fluor 488-conjugated AffiniPure Goat Anti-Rabbit IgG(H+L)