

## Igfbp1 Antibody

PACO27553

### Description

---

This Igfbp1 Antibody is supplied as a kit for advanced applications. The kit includes Bradford Reagent to quantify total protein concentration for accurate sample normalization (Optional).

### Product Information

---

<b>SKU:</b>	PACO27553
<b>Contents:</b>	50µg Bradford Reagent: 1 vial (2ml)
<b>Category:</b>	-
<b>Synonyms:</b>	Igfbp1 antibody, Igfbp-1 antibody, Insulin-like growth factor-binding protein 1 antibody, IBP-1 antibody, IGF-binding protein 1 antibody, IGFBP-1 antibody
<b>Clone:</b>	Polyclonal
<b>Applications:</b>	<b>ELISA</b> <b>WB</b>
<b>Conjugation:</b>	Non-conjugated
<b>Reactivity:</b>	Mouse, Human

### Antibody Data

---

<b>Isotype:</b>	IgG
<b>Uniprot:</b>	P47876
<b>Host Species:</b>	Rabbit
<b>Purification:</b>	>95%, Protein G purified
<b>Immunogen:</b>	Recombinant Mouse Insulin-like growth factor-binding protein 1 protein (26-272AA)
<b>Immunogen Species:</b>	Mus musculus (Mouse)
<b>Buffer:</b>	Preservative: 0.03% Proclin 300 Constituents: 50% Glycerol, 0.01M PBS, PH 7.4
<b>Form:</b>	Liquid

**Manufacturers Statement:** This final kit system is assembled and quality-released by Assay Genie Limited.

## Preparation & Storage

**Storage:** Upon receipt, store at -20°C or -80°C. Avoid repeated freeze.

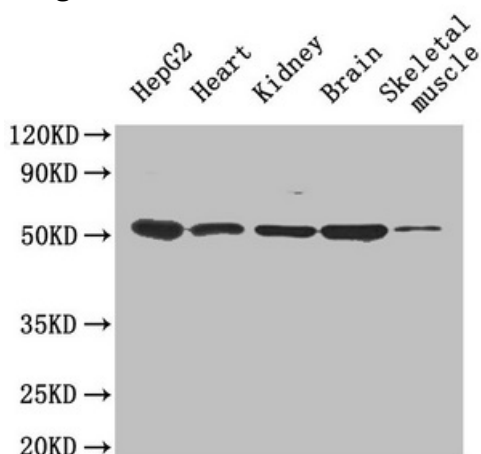
Store Bradford Reagent at Room Temperature for 1 Year.

Recommended Dilutions:	Application	Recommended Dilution
	WB	1:1000-1:5000

**Protein Quantification (Optional):** To quantify total protein levels, use the Bradford Reagent included in this kit. Visit <https://www.assaygenie.com/bradford-protein-assay-protocol/> to view the full protocol

## Validation Data

### Image



### Description

Western Blot Positive WB detected in: HepG2 whole cell lysate, Mouse heart tissue, Mouse kidney tissue, Mouse brain tissue, Mouse skeletal muscle tissue All lanes: Igfbp1 antibody at 0.6µg/ml Secondary Goat polyclonal to rabbit IgG at 1/50000 dilution Predicted band size: 30 kDa Observed band size: 50 kDa