

LRBA Antibody

PACO28013

Description

This LRBA Antibody is supplied as a kit for advanced applications. The kit includes Bradford Reagent to quantify total protein concentration for accurate sample normalization (Optional).

Product Information

SKU:	PACO28013
Contents:	50µg Bradford Reagent: 1 vial (2ml)
Category:	-
Synonyms:	Beige-like protein antibody, BGL antibody, C80285 antibody, CDC4-like protein antibody, CDC4L antibody, CVID8 antibody, D3ErtD775e antibody, Lab300 antibody, LBA antibody, Lipopolysaccharide-responsive and beige-like anchor protein antibody, LPS-responsive vesicle trafficking beach and anchor containing antibody, Lrba antibody, LRBA_HUMAN antibody, Vesicle trafficking beach and anchor containing antibody
Clone:	Polyclonal
Applications:	ELISA IHC IF
Conjugation:	Non-conjugated
Reactivity:	Human

Antibody Data

Isotype:	IgG
Uniprot:	P50851
Host Species:	Rabbit
Purification:	>95%, Protein G purified
Immunogen:	Recombinant Human Lipopolysaccharide-responsive and beige-like anchor protein (2-252AA)
Immunogen Species:	Homo sapiens (Human)
Buffer:	Preservative: 0.03% Proclin 300 Constituents: 50% Glycerol, 0.01M PBS, PH 7.4

Manufacturers Statement: This final kit system is assembled and quality-released by Assay Genie Limited.

Form: Liquid

Preparation & Storage

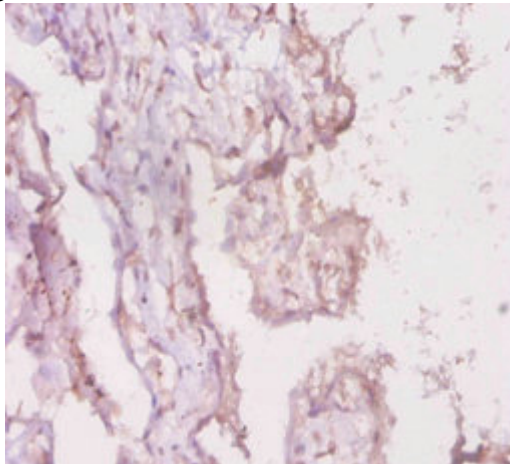
Storage: Upon receipt, store at -20°C or -80°C. Avoid repeated freeze.
Store Bradford Reagent at Room Temperature for 1 Year.

Recommended Dilutions:	Application	Recommended Dilution
	IHC	1:20-1:200
	IF	1:50-1:200

Protein Quantification (Optional): To quantify total protein levels, use the Bradford Reagent included in this kit. Visit <https://www.assaygenie.com/bradford-protein-assay-protocol/> to view the full protocol

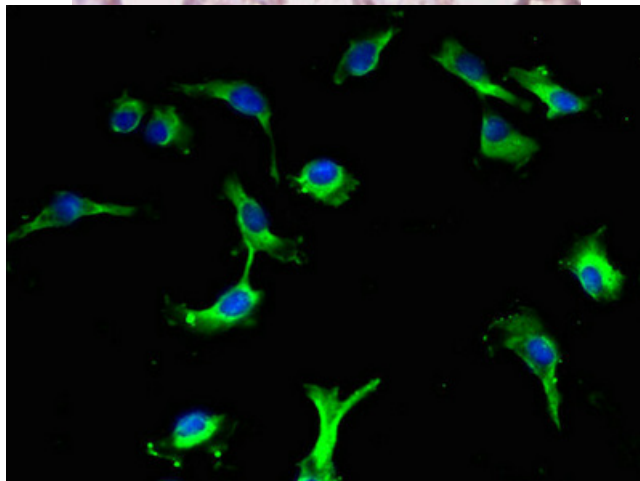
Validation Data

Image

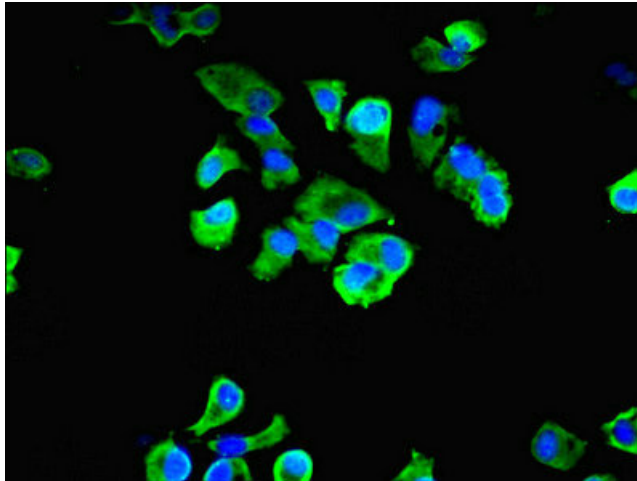


Description

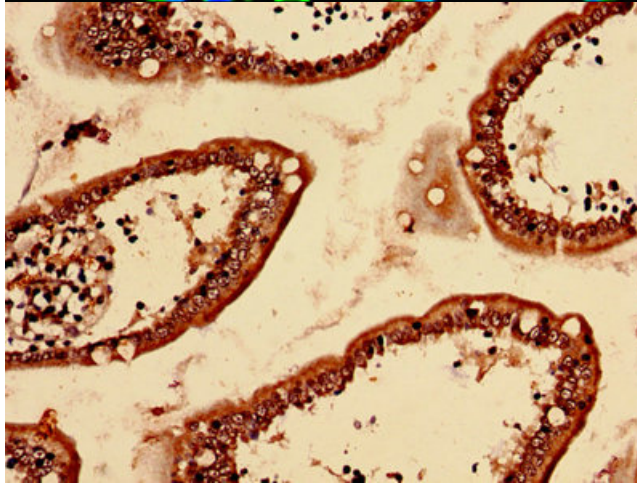
Immunohistochemistry of paraffin-embedded human placenta tissue using PACO28013 at dilution of 1:20



Immunofluorescent analysis of U251 cells using PACO28013 at dilution of 1:100 and Alexa Fluor 488-conjugated AffiniPure Goat Anti-Rabbit IgG(H+L)



Immunofluorescent analysis of MCF-7 cells using PACO28013 at dilution of 1:100 and Alexa Fluor 488-conjugated AffiniPure Goat Anti-Rabbit IgG(H+L)



Immunohistochemistry analysis of human small intestine tissue using PACO28013 at dilution of 1:100