

## PBLD Antibody

PACO28822

### Description

---

This PBLD Antibody is supplied as a kit for advanced applications. The kit includes Bradford Reagent to quantify total protein concentration for accurate sample normalization (Optional).

### Product Information

---

<b>SKU:</b>	PACO28822
<b>Contents:</b>	50µg Bradford Reagent: 1 vial (2ml)
<b>Category:</b>	-
<b>Synonyms:</b>	FLJ14767 antibody, FLJ35507 antibody, MAWBP antibody, MAWD binding protein antibody, MAWD-binding protein antibody, MAWDBP antibody, OTTHUMP00000019698 antibody, OTTHUMP00000082489 antibody, PBLD antibody, PBLD_HUMAN antibody, Phenazine biosynthesis like domain containing protein antibody, Phenazine biosynthesis like protein domain containing antibody, Phenazine biosynthesis-like domain-containing protein antibody, Unknown protein 32 from 2D page of liver tissue antibody, Unknown protein 32 from 2D-page of liver tissue antibody
<b>Clone:</b>	Polyclonal
<b>Applications:</b>	<b>ELISA</b> <b>WB</b> <b>IHC</b>
<b>Conjugation:</b>	Non-conjugated
<b>Reactivity:</b>	Human, Mouse

### Antibody Data

---

<b>Isotype:</b>	IgG
<b>Uniprot:</b>	P30039
<b>Host Species:</b>	Rabbit
<b>Purification:</b>	>95%, Protein G purified
<b>Immunogen:</b>	Recombinant Human Phenazine biosynthesis-like domain-containing protein (11-288AA)
<b>Immunogen Species:</b>	Homo sapiens (Human)

**Manufacturers Statement:** This final kit system is assembled and quality-released by Assay Genie Limited.

**Buffer:** Preservative: 0.03% Proclin 300 Constituents: 50% Glycerol, 0.01M PBS,  
PH 7.4

**Form:** Liquid

## Preparation & Storage

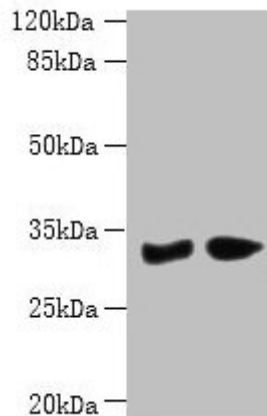
**Storage:** Upon receipt, store at -20°C or -80°C. Avoid repeated freeze.  
Store Bradford Reagent at Room Temperature for 1 Year.

Recommended Dilutions:	Application	Recommended Dilution
	WB	1:500-1:2000
	IHC	1:20-1:200

**Protein Quantification (Optional):** To quantify total protein levels, use the Bradford Reagent included in this kit. Visit <https://www.assaygenie.com/bradford-protein-assay-protocol/> to view the full protocol

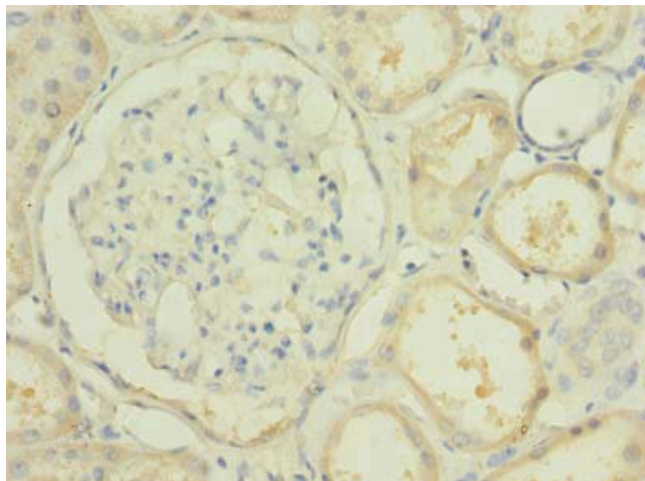
## Validation Data

### Image



### Description

Western blot All lanes: PBLD antibody at 6µg/ml Lane 1: Mouse liver tissue Lane 2: Mouse kidney tissue Secondary Goat polyclonal to rabbit IgG at 1/10000 dilution Predicted band size: 32 kDa Observed band size: 32 kDa



Immunohistochemistry of paraffin-embedded human kidney tissue using PACO28822 at dilution of 1:100