

Ccl2 Antibody

PACO32652

Description

This Ccl2 Antibody is supplied as a kit for advanced applications. The kit includes Bradford Reagent to quantify total protein concentration for accurate sample normalization (Optional).

Product Information

SKU:	PACO32652
Contents:	50µg Bradford Reagent: 1 vial (2ml)
Category:	-
Synonyms:	Ccl2 antibody, Je antibody, Mcp1 antibody, Scya2 antibody, C-C motif chemokine 2 antibody, Monocyte chemoattractant protein 1 antibody, Monocyte chemotactic protein 1 antibody, MCP-1 antibody, Platelet-derived growth factor-inducible protein JE antibody, Small-inducible cytokine A2 antibody
Clone:	Polyclonal
Applications:	ELISA IF
Conjugation:	Non-conjugated
Reactivity:	Mouse

Antibody Data

Isotype:	IgG
Uniprot:	P10148
Host Species:	Rabbit
Purification:	>95%, Protein G purified
Immunogen:	Recombinant Mouse C-C motif chemokine 2 protein (24-96AA)
Immunogen Species:	Mus musculus (Mouse)
Buffer:	Preservative: 0.03% Proclin 300 Constituents: 50% Glycerol, 0.01M PBS, PH 7.4
Form:	Liquid

Manufacturers Statement: This final kit system is assembled and quality-released by Assay Genie Limited.

Preparation & Storage

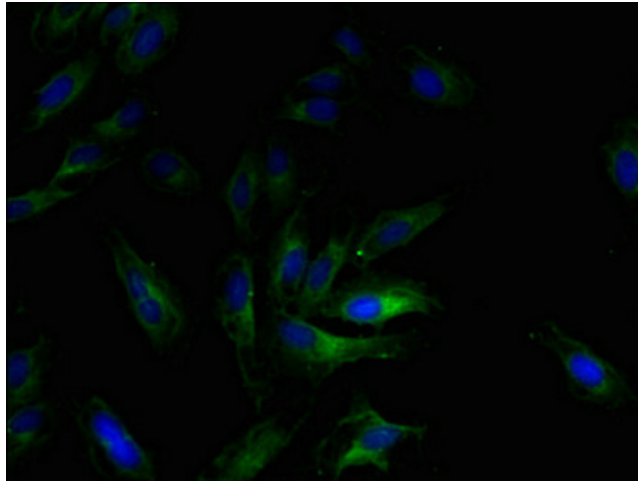
Storage: Upon receipt, store at -20°C or -80°C. Avoid repeated freeze.
Store Bradford Reagent at Room Temperature for 1 Year.

Recommended Dilutions:	Application	Recommended Dilution
	IF	1:50-1:200

Protein Quantification (Optional): To quantify total protein levels, use the Bradford Reagent included in this kit. Visit <https://www.assaygenie.com/bradford-protein-assay-protocol/> to view the full protocol

Validation Data

Image



Description

Immunofluorescent analysis of HeLa cells using PACO32652 at dilution of 1:100 and Alexa Fluor 488-conjugated AffiniPure Goat Anti-Rabbit IgG(H+L)