

CYCB1-1 Antibody

PACO34482

Description

This CYCB1-1 Antibody is supplied as a kit for advanced applications. The kit includes Bradford Reagent to quantify total protein concentration for accurate sample normalization (Optional).

Product Information

SKU:	PACO34482
Contents:	50µg Bradford Reagent: 1 vial (2ml)
Category:	-
Synonyms:	CYCB1-1 antibody, CYC1 antibody, At4g37490 antibody, F6G17.140Cyclin-B1-1 antibody, Cyc1-At antibody, G2/mitotic-specific cyclin-B1-1 antibody, CycB1,1 antibody
Clone:	Polyclonal
Applications:	ELISA WB
Conjugation:	Non-conjugated
Reactivity:	Arabidopsis thaliana

Antibody Data

Isotype:	IgG
Uniprot:	P30183
Host Species:	Rabbit
Purification:	>95%, Protein G purified
Immunogen:	Recombinant Arabidopsis thaliana Cyclin-B1-1 protein (1-428AA)
Immunogen Species:	Arabidopsis thaliana
Buffer:	Preservative: 0.03% Proclin 300 Constituents: 50% Glycerol, 0.01M PBS, PH 7.4
Form:	Liquid

Manufacturers Statement: This final kit system is assembled and quality-released by Assay Genie Limited.

Preparation & Storage

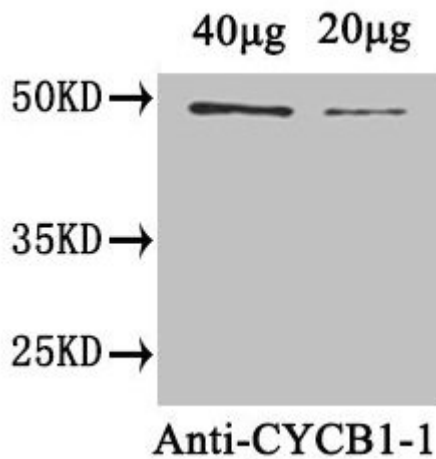
Storage: Upon receipt, store at -20°C or -80°C. Avoid repeated freeze.
Store Bradford Reagent at Room Temperature for 1 Year.

Recommended Dilutions:	Application	Recommended Dilution
	WB	1:1000-1:5000

Protein Quantification (Optional): To quantify total protein levels, use the Bradford Reagent included in this kit. Visit <https://www.assaygenie.com/bradford-protein-assay-protocol/> to view the full protocol

Validation Data

Image



Description

Western Blot Positive WB detected in: Arabidopsis thaliana (40µg, 20µg) All lanes: CYCB1-1 antibody at 1.8µg/ml Secondary Goat polyclonal to rabbit IgG at 1/50000 dilution Predicted band size: 49 kDa Observed band size: 49 kDa