

Ly6e Antibody

PACO36374

Description

This Ly6e Antibody is supplied as a kit for advanced applications. The kit includes Bradford Reagent to quantify total protein concentration for accurate sample normalization (Optional).

Product Information

SKU:	PACO36374
Contents:	50µg Bradford Reagent: 1 vial (2ml)
Category:	-
Synonyms:	Ly6e antibody, Ly67 antibody, Sca-2 antibody, Tsa-1Lymphocyte antigen 6E antibody, Ly-6E antibody, Stem cell antigen 2 antibody, Thymic shared antigen 1 antibody, TSA-1 antibody
Clone:	Polyclonal
Applications:	ELISA WB
Conjugation:	Non-conjugated
Reactivity:	Mouse, Human

Antibody Data

Isotype:	IgG
Uniprot:	Q64253
Host Species:	Rabbit
Purification:	>95%, Protein G purified
Immunogen:	Recombinant Mouse Lymphocyte antigen 6E protein (21-102AA)
Immunogen Species:	Mus musculus (Mouse)
Buffer:	Preservative: 0.03% Proclin 300 Constituents: 50% Glycerol, 0.01M PBS, PH 7.4
Form:	Liquid

Manufacturers Statement: This final kit system is assembled and quality-released by Assay Genie Limited.

Preparation & Storage

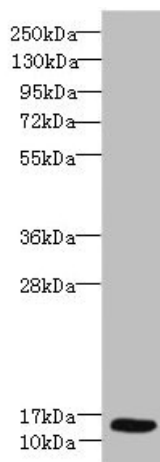
Storage: Upon receipt, store at -20°C or -80°C. Avoid repeated freeze.
Store Bradford Reagent at Room Temperature for 1 Year.

Recommended Dilutions:	Application	Recommended Dilution
	WB	1:500-1:2000

Protein Quantification (Optional): To quantify total protein levels, use the Bradford Reagent included in this kit. Visit <https://www.assaygenie.com/bradford-protein-assay-protocol/> to view the full protocol

Validation Data

Image



Description

Western blot All lanes: Ly6e antibody at 8µg/ml + Hela whole cell lysate Secondary Goat polyclonal to rabbit IgG at 1/10000 dilution Predicted band size: 14 kDa
Observed band size: 14 kDa