

ASPHD2 Antibody

PACO37058

Description

This ASPHD2 Antibody is supplied as a kit for advanced applications. The kit includes Bradford Reagent to quantify total protein concentration for accurate sample normalization (Optional).

Product Information

SKU:	PACO37058
Contents:	50µg Bradford Reagent: 1 vial (2ml)
Category:	-
Synonyms:	ASPHD2Aspartate beta-hydroxylase domain-containing protein 2 antibody, EC 1.14.11.- antibody
Clone:	Polyclonal
Applications:	ELISA WB
Conjugation:	Non-conjugated
Reactivity:	Human

Antibody Data

Isotype:	IgG
Uniprot:	Q6ICH7
Host Species:	Rabbit
Purification:	>95%, Protein G purified
Immunogen:	Recombinant Human Aspartate beta-hydroxylase domain-containing protein 2 protein (80-369AA)
Immunogen Species:	Homo sapiens (Human)
Buffer:	Preservative: 0.03% Proclin 300 Constituents: 50% Glycerol, 0.01M PBS, PH 7.4
Form:	Liquid

Manufacturers Statement: This final kit system is assembled and quality-released by Assay Genie Limited.

Preparation & Storage

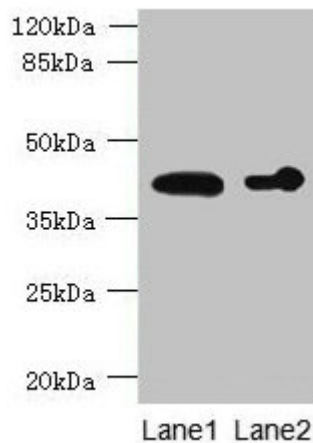
Storage: Upon receipt, store at -20°C or -80°C. Avoid repeated freeze.
Store Bradford Reagent at Room Temperature for 1 Year.

Recommended Dilutions:	Application	Recommended Dilution
	WB	1:500-1:2000

Protein Quantification (Optional): To quantify total protein levels, use the Bradford Reagent included in this kit. Visit <https://www.assaygenie.com/bradford-protein-assay-protocol/> to view the full protocol

Validation Data

Image



Description

Western blot All lanes: ASPHD2 antibody at 4µg/ml Lane 1: Hela whole cell lysate Lane 2: HL60 whole cell lysate Secondary Goat polyclonal to rabbit IgG at 1/10000 dilution Predicted band size: 42 kDa Observed band size: 42 kDa