

## AMIGO1 Antibody

PACO37418

### Description

---

This AMIGO1 Antibody is supplied as a kit for advanced applications. The kit includes Bradford Reagent to quantify total protein concentration for accurate sample normalization (Optional).

### Product Information

---

<b>SKU:</b>	PACO37418
<b>Contents:</b>	50µg Bradford Reagent: 1 vial (2ml)
<b>Category:</b>	-
<b>Synonyms:</b>	Adhesion molecule with Ig like domain 1 antibody, ali2 antibody, Alivin 2 antibody, Alivin-2 antibody, AMGO1_HUMAN antibody, AMIGO 1 antibody, AMIGO antibody, AMIGO protein antibody, AMIGO-1 antibody, Amigo1 antibody, Amphoterin induced gene and ORF (Amigo) antibody, Amphoterin induced gene and ORF antibody, Amphoterin induced protein 1 antibody, Amphoterin-induced protein 1 antibody, KIAA1163 antibody, MGC25558 antibody, OTTHUMP00000013379 antibody, RP23 89M15.6 antibody
<b>Clone:</b>	Polyclonal
<b>Applications:</b>	<b>ELISA</b> <b>IHC</b>
<b>Conjugation:</b>	Non-conjugated
<b>Reactivity:</b>	Human

### Antibody Data

---

<b>Isotype:</b>	IgG
<b>Uniprot:</b>	Q86WK6
<b>Host Species:</b>	Rabbit
<b>Purification:</b>	>95%, Protein G purified
<b>Immunogen:</b>	Recombinant Human Amphoterin-induced protein 1 protein (28-327AA)
<b>Immunogen Species:</b>	Homo sapiens (Human)
<b>Buffer:</b>	Preservative: 0.03% Proclin 300 Constituents: 50% Glycerol, 0.01M PBS, PH 7.4

**Manufacturers Statement:** This final kit system is assembled and quality-released by Assay Genie Limited.

**Form:** Liquid

## Preparation & Storage

---

**Storage:** Upon receipt, store at -20°C or -80°C. Avoid repeated freeze.  
Store Bradford Reagent at Room Temperature for 1 Year.

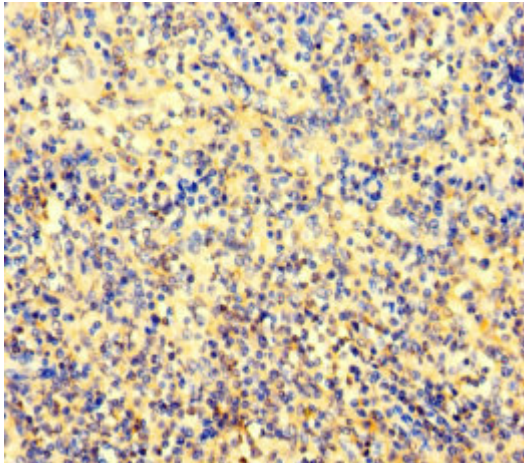
Recommended Dilutions:	Application	Recommended Dilution
	IHC	1:20-1:200

**Protein Quantification (Optional):** To quantify total protein levels, use the Bradford Reagent included in this kit. Visit <https://www.assaygenie.com/bradford-protein-assay-protocol/> to view the full protocol

## Validation Data

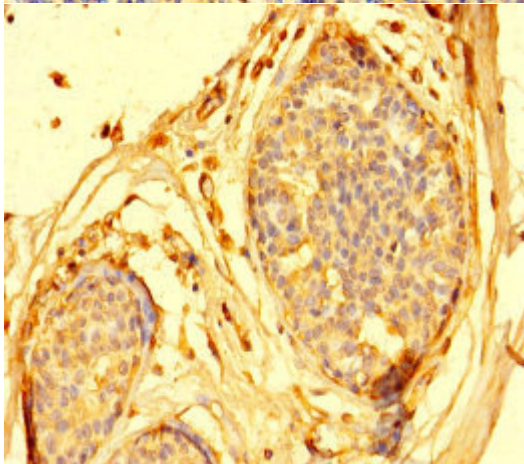
---

### Image



### Description

Immunohistochemistry of paraffin-embedded human spleen tissue using PACO37418 at dilution of 1:100



Immunohistochemistry of paraffin-embedded human breast cancer using PACO37418 at dilution of 1:100