

CBWD2 Antibody

PACO37778

Description

This CBWD2 Antibody is supplied as a kit for advanced applications. The kit includes Bradford Reagent to quantify total protein concentration for accurate sample normalization (Optional).

Product Information

SKU:	PACO37778
Contents:	50µg Bradford Reagent: 1 vial (2ml)
Category:	-
Synonyms:	CBWD2 antibody, CBWD2_HUMAN antibody, Cobalamin synthase W domain-containing protein 2 antibody, Cobalamin synthetase W domain-containing protein 2 antibody, COBW domain-containing protein 2 antibody
Clone:	Polyclonal
Applications:	ELISA WB IHC IF
Conjugation:	Non-conjugated
Reactivity:	Human, Mouse

Antibody Data

Isotype:	IgG
Uniprot:	Q8IUF1
Host Species:	Rabbit
Purification:	>95%, Protein G purified
Immunogen:	Recombinant Human COBW domain-containing protein 2 protein (96-395AA)
Immunogen Species:	Homo sapiens (Human)
Buffer:	Preservative: 0.03% Proclin 300 Constituents: 50% Glycerol, 0.01M PBS, PH 7.4
Form:	Liquid

Manufacturers Statement: This final kit system is assembled and quality-released by Assay Genie Limited.

Preparation & Storage

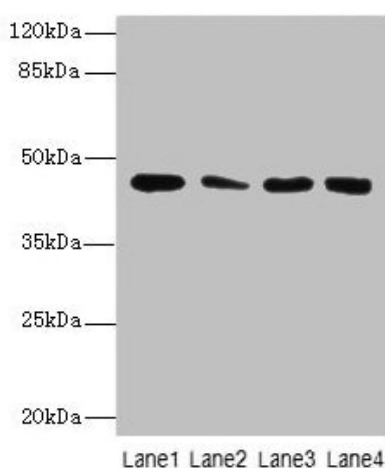
Storage: Upon receipt, store at -20°C or -80°C. Avoid repeated freeze.
Store Bradford Reagent at Room Temperature for 1 Year.

Recommended Dilutions:	Application	Recommended Dilution
	WB	1:1000-1:5000
	IHC	1:20-1:200
	IF	1:50-1:200

Protein Quantification (Optional): To quantify total protein levels, use the Bradford Reagent included in this kit. Visit <https://www.assaygenie.com/bradford-protein-assay-protocol/> to view the full protocol

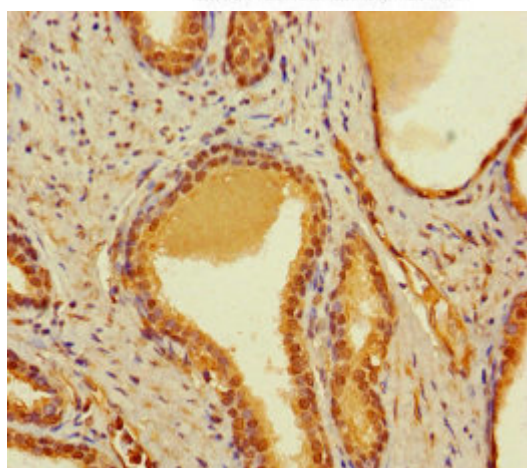
Validation Data

Image

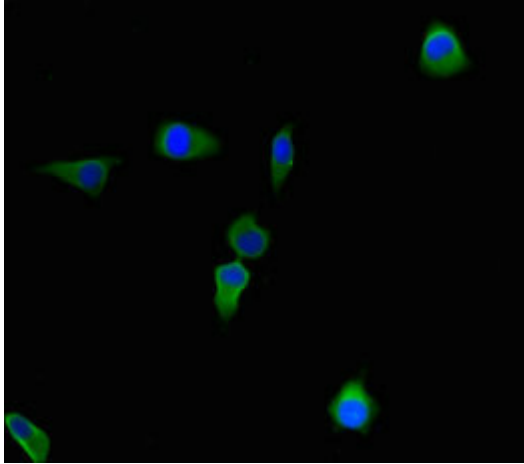


Description

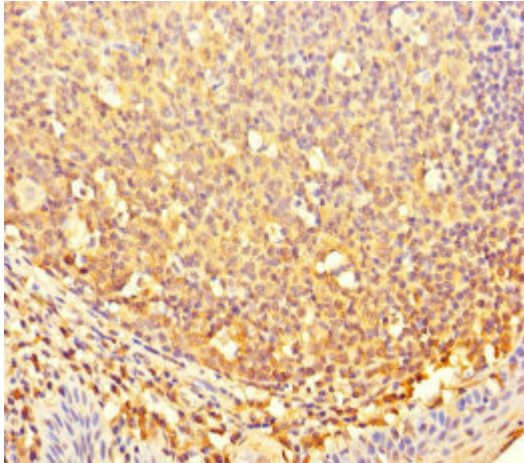
Western Blot All lanes: CBWD2 antibody at 6µg/ml
Lane 1: Mouse heart tissue Lane 2: Mouse liver tissue Lane 3: Mouse lung tissue Lane 4: Hela whole cell lysate Secondary Goat polyclonal to rabbit IgG at 1/10000 dilution Predicted band size: 45 kDa Observed band size: 45 kDa



Immunohistochemistry of paraffin-embedded human prostate cancer using PACO37778 at dilution of 1:100



Immunofluorescent analysis of HeLa cells using PACO37778 at dilution of 1:100 and Alexa Fluor 488-conjugated AffiniPure Goat Anti-Rabbit IgG(H+L)



Immunohistochemistry of paraffin-embedded human tonsil tissue using PACO37778 at dilution of 1:100