

AFG1L Antibody

PACO38066

Description

This AFG1L Antibody is supplied as a kit for advanced applications. The kit includes Bradford Reagent to quantify total protein concentration for accurate sample normalization (Optional).

Product Information

SKU:	PACO38066
Contents:	50µg Bradford Reagent: 1 vial (2ml)
Category:	-
Synonyms:	AFG1 antibody, ATPase family gene 1 homolog antibody, CG8520 gene product antibody, lace1 antibody, LACE1_HUMAN antibody, Lactation elevated protein 1 antibody, Lactivation elevated 1 antibody, Protein AFG1 homolog antibody
Clone:	Polyclonal
Applications:	ELISA WB IHC IF
Conjugation:	Non-conjugated
Reactivity:	Human, Rat

Antibody Data

Isotype:	IgG
Uniprot:	Q8WV93
Host Species:	Rabbit
Purification:	>95%, Protein G purified
Immunogen:	Recombinant Human AFG1-like ATPase protein (14-313AA)
Immunogen Species:	Homo sapiens (Human)
Buffer:	Preservative: 0.03% Proclin 300 Constituents: 50% Glycerol, 0.01M PBS, PH 7.4
Form:	Liquid

Manufacturers Statement: This final kit system is assembled and quality-released by Assay Genie Limited.

Preparation & Storage

Storage: Upon receipt, store at -20°C or -80°C. Avoid repeated freeze.

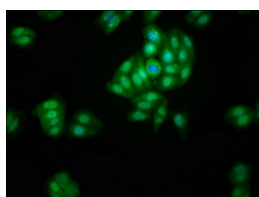
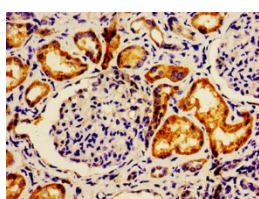
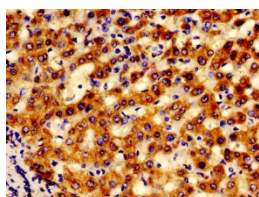
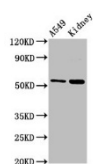
Store Bradford Reagent at Room Temperature for 1 Year.

Recommended Dilutions:	Application	Recommended Dilution
	WB	1:500-1:5000
	IHC	1:500-1:1000
	IF	1:200-1:500

Protein Quantification (Optional): To quantify total protein levels, use the Bradford Reagent included in this kit. Visit <https://www.assaygenie.com/bradford-protein-assay-protocol/> to view the full protocol

Validation Data

Image



Description

Western Blot Positive WB detected in: A549 whole cell lysate, Rat kidney tissue All lanes: AFG1L antibody at 3µg/ml Secondary Goat polyclonal to rabbit IgG at 1/50000 dilution Predicted band size: 55 kDa Observed band size: 55 kDa

IHC image of PACO38066 diluted at 1:600 and staining in paraffin-embedded human liver cancer performed on a Leica Bond™ system. After dewaxing and hydration, antigen retrieval was mediated by high pressure in a citrate buffer (pH 6.0). Section was blocked with 10% normal goat serum 30min at RT. Then primary antibody (1% BSA) was incubated at 4°C overnight. The primary is detected by a biotinylated secondary antibody and visualized using an HRP conjugated SP system.

IHC image of PACO38066 diluted at 1:600 and staining in paraffin-embedded human kidney tissue performed on a Leica Bond™ system. After dewaxing and hydration, antigen retrieval was mediated by high pressure in a citrate buffer (pH 6.0). Section was blocked with 10% normal goat serum 30min at RT. Then primary antibody (1% BSA) was incubated at 4°C overnight. The primary is detected by a biotinylated secondary antibody and visualized using an HRP conjugated SP system.

Immunofluorescence staining of HepG2 cells with PACO38066 at 1:200, counter-stained with DAPI. The cells were fixed in 4% formaldehyde, permeabilized using 0.2% Triton X-100 and blocked in 10% normal Goat Serum. The cells were then incubated with the antibody overnight at 4°C. The secondary antibody was Alexa Fluor 488-conjugated AffiniPure Goat Anti-Rabbit IgG(H+L).