

LRRC20 Antibody

PACO38342

Description

This LRRC20 Antibody is supplied as a kit for advanced applications. The kit includes Bradford Reagent to quantify total protein concentration for accurate sample normalization (Optional).

Product Information

SKU:	PACO38342
Contents:	50µg Bradford Reagent: 1 vial (2ml)
Category:	-
Synonyms:	BC036304 antibody, FLJ10751 antibody, FLJ10844 antibody, Leucine rich repeat containing 20 antibody, Leucine rich repeat containing protein 20 antibody, Leucine-rich repeat-containing protein 20 antibody, LRC20_HUMAN antibody, Lrrc20 antibody, MGC25719 antibody, OTTHUMP00000019752 antibody, OTTHUMP00000035622 antibody, UNQ2429/PRO4989 antibody
Clone:	Polyclonal
Applications:	ELISA WB IHC
Conjugation:	Non-conjugated
Reactivity:	Human, Mouse

Antibody Data

Isotype:	IgG
Uniprot:	Q8TCA0
Host Species:	Rabbit
Purification:	Antigen Affinity Purified
Immunogen:	Recombinant Human Leucine-rich repeat-containing protein 20 protein (1-184AA)
Immunogen Species:	Homo sapiens (Human)
Buffer:	Preservative: 0.03% Proclin 300 Constituents: 50% Glycerol, 0.01M PBS, PH 7.4

Manufacturers Statement: This final kit system is assembled and quality-released by Assay Genie Limited.

Form: Liquid

Preparation & Storage

Storage: Upon receipt, store at -20°C or -80°C. Avoid repeated freeze.

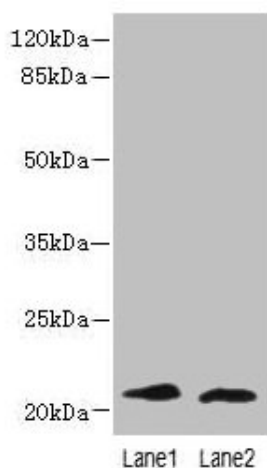
Store Bradford Reagent at Room Temperature for 1 Year.

Recommended Dilutions:	Application	Recommended Dilution
	WB	1:1000-1:5000
	IHC	1:20-1:200

Protein Quantification (Optional): To quantify total protein levels, use the Bradford Reagent included in this kit. Visit <https://www.assaygenie.com/bradford-protein-assay-protocol/> to view the full protocol

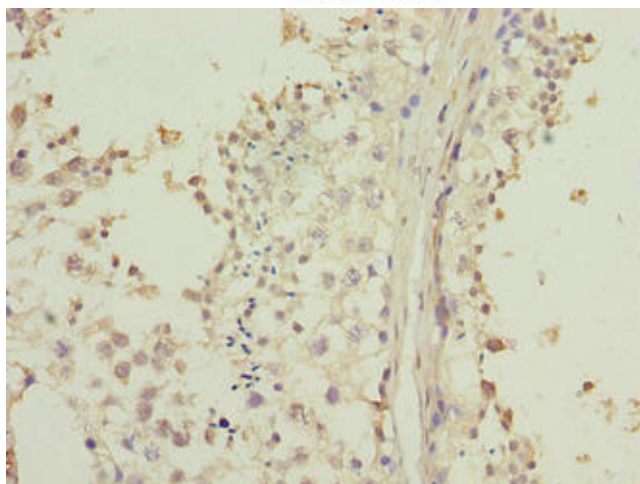
Validation Data

Image

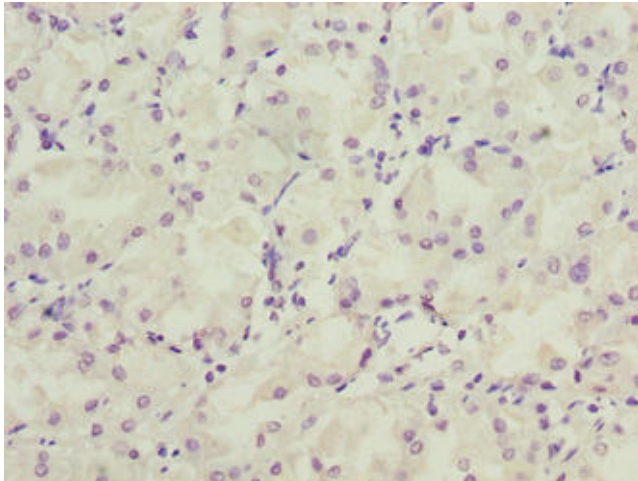


Description

Western blot All lanes: LRRC20 antibody at 1µg/ml Lane 1: Jurkat whole cell lysate Lane 2: Mouse spleen tissue Secondary Goat polyclonal to rabbit IgG at 1/10000 dilution Predicted band size: 21, 15 kDa Observed band size: 21 kDa



Immunohistochemistry of paraffin-embedded human testis tissue using PACO38342 at dilution of 1:100



Immunohistochemistry of paraffin-embedded human gastric cancer using PACO38342 at dilution of 1:100