

LYSMD1 Antibody

PACO38506

Description

This LYSMD1 Antibody is supplied as a kit for advanced applications. The kit includes Bradford Reagent to quantify total protein concentration for accurate sample normalization (Optional).

Product Information

SKU:	PACO38506
Contents:	50µg Bradford Reagent: 1 vial (2ml)
Category:	-
Synonyms:	LYSMD1 antibody, SB145LysM and putative peptidoglycan-binding domain-containing protein 1 antibody
Clone:	Polyclonal
Applications:	ELISA IHC
Conjugation:	Non-conjugated
Reactivity:	Human

Antibody Data

Isotype:	IgG
Uniprot:	Q96S90
Host Species:	Rabbit
Purification:	Antigen Affinity Purified
Immunogen:	Recombinant Human LysM and putative peptidoglycan-binding domain-containing protein 1 protein (1-227AA)
Immunogen Species:	Homo sapiens (Human)
Buffer:	Preservative: 0.03% Proclin 300 Constituents: 50% Glycerol, 0.01M PBS, PH 7.4
Form:	Liquid

Manufacturers Statement: This final kit system is assembled and quality-released by Assay Genie Limited.

Preparation & Storage

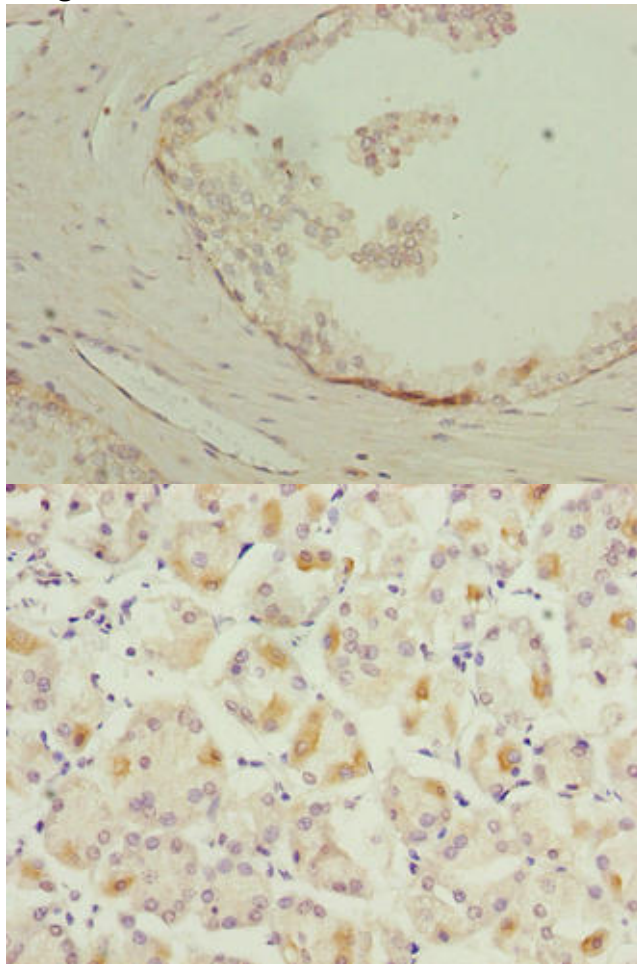
Storage: Upon receipt, store at -20°C or -80°C. Avoid repeated freeze.
Store Bradford Reagent at Room Temperature for 1 Year.

Recommended Dilutions:	Application	Recommended Dilution
	IHC	1:20-1:200

Protein Quantification (Optional): To quantify total protein levels, use the Bradford Reagent included in this kit. Visit <https://www.assaygenie.com/bradford-protein-assay-protocol/> to view the full protocol

Validation Data

Image



Description

Immunohistochemistry of paraffin-embedded human prostate cancer using PACO38506 at dilution of 1:100

Immunohistochemistry of paraffin-embedded human gastric cancer using PACO38506 at dilution of 1:100